

### Pipe slides type THV-2

with two pipe clamps, DIN 3567

#### Application

- For fastening piping in heavy-duty building technology, industrial building and plant construction
- For fastening piping with slope or consistent centre line

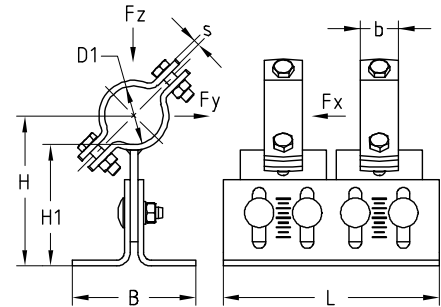
#### Your benefits

- Individual adjustment of the distance between the pipe clamp and subconstruction on the building site
- Compensation for height tolerances and unevenness in the subconstruction
- Slope adjustment axial direction up to 10°
- Hot-dip galvanised for outdoor use




Type	Adjustment range [mm]	Nominal size DN	Pipe outer diameter D1 [mm]	Item no.	Supply unit	Quantity unit
THV-2-100 W37-OF-SF 33.7	100–140	25	33.7	169670	1	Item
THV-2-100 W37-OF-SF 42.4		32	42.4	169671		
THV-2-100 W37-OF-SF 48.3		40	48.3	169672		
THV-2-100 W37-OF-SF 60.3		50	60.3	169673		
THV-2-100 W37-OF-SF 76.1		65	76.1	169674		
THV-2-100 W37-OF-SF 88.9		80	88.9	169675		
THV-2-100 W37-OF-SF 114.3		100	114.3	169676		
THV-2-100 W37-OF-SF 139.7		125	139.7	169677		
THV-2-100 W37-OF-SF 168.3		150	168.3	169678		
THV-2-100 W37-OF-SF 193.7		(175)	193.7	169679		
THV-2-100 W37-OF-SF 219.1		200	219.1	169680		
THV-2-140 W37-OF-SF 33.7		140–180	25	33.7		
THV-2-140 W37-OF-SF 42.4	32		42.4	169682		
THV-2-140 W37-OF-SF 48.3	40		48.3	169683		
THV-2-140 W37-OF-SF 60.3	50		60.3	169684		
THV-2-140 W37-OF-SF 76.1	65		76.1	169685		
THV-2-140 W37-OF-SF 88.9	80		88.9	169686		
THV-2-140 W37-OF-SF 114.3	100		114.3	169687		
THV-2-140 W37-OF-SF 139.7	125		139.7	169688		
THV-2-140 W37-OF-SF 168.3	150		168.3	169689		
THV-2-140 W37-OF-SF 193.7	(175)		193.7	169690		
THV-2-140 W37-OF-SF 219.1	200		219.1	169691		
THV-2-180 W37-OF-SF 33.7	180–220		25	33.7	169692	
THV-2-180 W37-OF-SF 42.4		32	42.4	169693		
THV-2-180 W37-OF-SF 48.3		40	48.3	169694		
THV-2-180 W37-OF-SF 60.3		50	60.3	169695		
THV-2-180 W37-OF-SF 76.1		65	76.1	169696		
THV-2-180 W37-OF-SF 88.9		80	88.9	169697		
THV-2-180 W37-OF-SF 114.3		100	114.3	169698		
THV-2-180 W37-OF-SF 139.7		125	139.7	169699		
THV-2-180 W37-OF-SF 168.3		150	168.3	169700		
THV-2-180 W37-OF-SF 193.7		(175)	193.7	169701		
THV-2-180 W37-OF-SF 219.1		200	219.1	169702		

### Pipe slides type THV-2 with two pipe clamps, DIN 3567



Nominal size DN	Pipe outer diameter D1 [mm]	Dimensions [mm]						Load			Weight [kg/item]
		s	b	L	B	H	H1	F <sub>x</sub> [kN]	F <sub>y</sub> [kN]	F <sub>z</sub> [kN]	
25	33.7	5	30	225	128	117-157	100-140	7.2	4.6	16.0	4.54
32	42.4					122-162		7.0	4.5		4.61
40	48.3					125-165		6.8	4.4		4.65
50	60.3	6	40			132-172	101-141	6.6	4.2		5.35
65	76.1					140-180		6.3	4.0		5.59
80	88.9					146-186		6.1	3.9		5.67
100	114.3	8	50			161-201	103-143	5.7	3.6		7.75
125	139.7					173-213		5.3	3.4		8.25
150	168.3					188-228		5.0	3.2		8.80
(175)	193.7					200-240		4.7	3.0		9.30
200	219.1	5	30			213-253	140-180	4.5	2.9		9.81
25	33.7					157-197		5.7	3.6		4.99
32	42.4			162-202	5.6	3.6		5.06			
40	48.3			165-205	5.5	3.5		5.10			
50	60.3			6	40	172-212		141-181	5.3	3.4	5.80
65	76.1					180-220			5.1	3.3	5.97
80	88.9					186-226			5.0	3.2	6.12
100	114.3			8	50	201-241		143-183	4.7	3.0	8.20
125	139.7					213-253			4.5	2.9	8.70
150	168.3					228-268			4.2	2.7	9.25
(175)	193.7					240-280			4.1	2.6	9.75
200	219.1			6	40	253-293		180-220	3.9	2.5	10.26
25	33.7	197-237	4.7			3.0	5.44				
32	42.4	202-242	4.7			3.0	5.51				
40	48.3	205-245	4.6			2.9	5.56				
50	60.3	6	40			212-252	181-221		4.5	2.9	6.25
65	76.1					220-260			4.3	2.8	6.42
80	88.9					226-266			4.2	2.7	6.57
100	114.3	8	50			241-281	183-223		4.0	2.6	8.65
125	139.7					253-293			3.9	2.5	9.15
150	168.3					268-308			3.7	2.4	9.70
(175)	193.7					280-320			3.5	2.3	10.21
200	219.1	8	50			293-333			3.4	2.2	10.71

 \* For fixing the height adjustment a tightening torque of 75 Nm for the carriage bolts need to be considered.