

Cramping elements

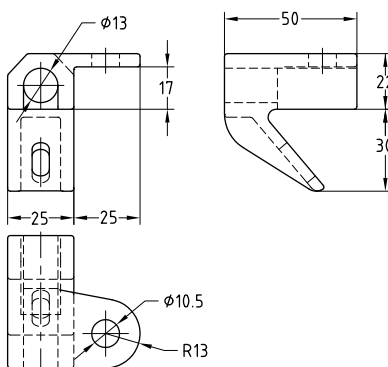
hot-dip galvanised

Field of application

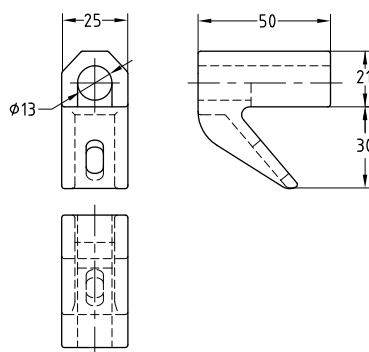
- Applicable in combination with pipe slides as anchor point, guidance with and without lift-off securing

Advantages

- Simple and efficient attachment of pipe slides to steel girder supporting structure, e.g. pipe bridges
- All cramping elements are in cast steel GS 45 with hot-dip galvanised surface



Type K1



Type K2

Type	Thread	Type	Connection to profile		Weight [kg/piece]	Part no.	Sales unit	Pack unit
			Flange thickness S [min.]	Flange thickness S [max.]				
K1	M12	left	6	20	0.230	113238	1	pieces
		right				113241		
K2		—			0.183	113244		



Other cramping elements available upon request.