

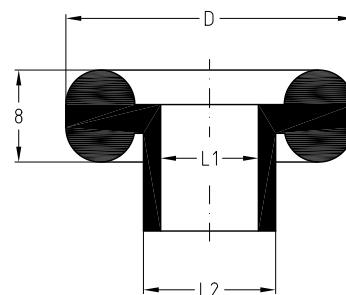
DÄMMGULAST® Washers

Field of application

- Decoupling of traverses and pipe bridges made of MPC-Support channels
- Can be fitted using screws, threaded pins and rods up to M10
- Ideal supplement to DÄMMGULAST® Resilient pad in channel installation

Advantages

- Highly elastic vibration decoupler for light compressive loadings
- Protective bushing against metal contact
- Very simple installation without additional work
- Noise reduction of up to 18 dB(A)



Features



	For thread	Size D x L1 [mm]	Part no.	Sales unit	Pack unit	Dimensions [mm]		
						D	L1	L2
DÄMMGULAST® Washers	M8	24 x 8.5	107087	100	pieces	24	8.5	11
		28 x 8.5	107089			28		
	M10	34 x 10.5	107086			34	10.5	14
	DÄMMGULAST® Washers, flame-resistant Washers	M8	24 x 8.5			107088	24	8.5
24 x 8.5			127238	28	–			
28 x 8.5			127229					
M10		36 x 10.5	127121	36	10.5			



For an even load distribution, always combine DÄMMGULAST® Washers with metal washers. Maximum recommended loading: 300 N.