

### OPTIMAL galvanised

#### Field of application

- Suitable for fixings in housing and industrial areas
- Suitable for fastening of drinking water and heating pipes
- For indoor use

#### Advantages

Economical solution due to advanced technology:

- **Practical latching fastener**
- The 2 locking screws allow adjustment to accommodate a greater variation in pipe diameter
- Installation advantages of an one-piece clamp
- High security due to the **positive-fit edge hook-in opening**
- **The pipe is free to move during the installation**
- No inadvertent opening once it has clicked in, due to the safety latching fastener



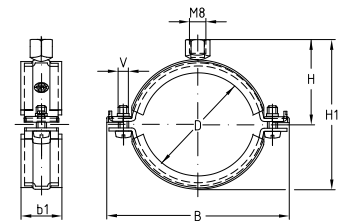
- Tightening bolts with combination, captive cross-head convenient for power driver
- DÄMMGULAST® vibration control lining with green identification stripe: average sound level improvement up to 18 dB(A)
- Optimum handling due to injury-proof design



#### Features



Size	Max. recommended load [N]
¼"-1¼"	800
1½"-70 mm	1,690
2½"-116 mm	2,320
125 mm-6"	2,696



- !** The attachment of pipes, especially under the ceiling, often requires the use of two hands. It is then convenient, if the OPTIMAL latching fastener can be closed with only one hand. After closing the latch, the pipe is safely held in place but remains free to move. Consequently, adjustment of pipe can be made with two hands.

*And don't forget:* high security due to the **positive-fit** edge hook-in opening.

### OPTIMAL galvanised



Connecting thread	Size		Clamping range [mm]	Part no.	Sales unit	Pack unit	Dimensions [mm]				
	[inch]	[mm]					B	b1	H1	H	V
M8	¼		13–15	119822	100	pieces	55	23	42	26	M5
	⅜		16–18	119838					45	28	
	½		19–24	119818					51	31	
	¾		25–30	119834					57	34	
	1		32–37	119806					65	38	
	1¼		41–44	119814					76	38	
	1½		48–51	119810	50		85	71	41	M6	
		57	53–58	119842			93	79	45		
	2		60–63	119826			100	86	49		
		70	69–73	119846			107	92	52		
	2½		74–78	119830			116	101	56		
							127	106	58		
M8/M10	¼		13–15	119866	100	pieces	55	23	46	30	M5
	⅜		16–18	119882					49	32	
	½		19–24	119862					55	35	
	¾		25–30	119878					61	38	
	1		32–37	119850					69	42	
	1¼		41–44	119858					76	42	
	1½		48–51	119854	50		85	75	45	M6	
		57	53–58	119886			93	83	49		
	2		60–63	119870			100	90	53		
		70	69–73	119894			107	96	56		
	2½		74–78	119874			116	105	60		
							127	110	62		
		83	80–84	119898	28		132	117	66		
	3		88–90	119794			139	122	68		
		102	99–103	119770			155	136	75		
		110	108–112	119774			163	145	80		
	4		113–117	119798			168	150	82		
		116	116–120	119778			172	153	84		
		125	125–129	119782			174	164	89		
		133	133–137	119786			185	171	93		
	5		137–141	119802			188	176	95		
		160	159–162	119790			212	197	106		
	6		164–168	119890			220	202	108		

	Connecting thread	Size [inch]	Part no.	Sales unit	Pack unit	Content [clamps]	Part no. Polybox excl. clamps	Type
OPTIMAL, with DÄMMGULAST® green, in polybox	M8	¼	119954	1	box	300	121019	Polybox large 500/450 x 300 x 180
		⅜	119962			200		
		½	119950					
		¾	119958					
		1	119946					