

### MPT-Steel beam adaptor plates

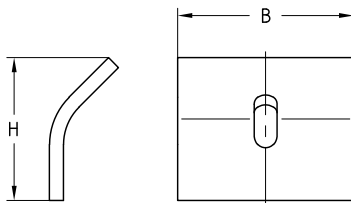
hot-dip galvanised

#### Field of application

- Stable hot-dip galvanised plates for connecting MPT-Support profiles with structural steel constructions

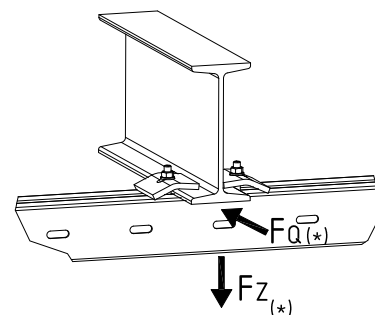
#### Advantages

- High-level corrosion protection due to standardised hot-dip galvanising ensures flexible implementation outdoors and indoors
- Broad support surface offers particularly safe transmission of force
- Suitable for girder flange thicknesses up to 24 mm



#### Max. load capacities:

For profile	Size of hammer head bolt	Max. recommended tensile load $F_z$ [N]	Max. recommended transverse load $F_o$ [N]	At tightening torque $T_{inst}$ [Nm]
Q50-2.5, Q100-2.5, Q100-3.5, Q150-2.5 Q80-2.0	M12 x 60	5,000	1,500	65



For profile	Part no.	Sales unit	Pack unit	Weight [kg/piece]	Dimensions [mm]	
					B	H
Q50-2.5, Q100-2.5, Q100-3.5, Q150-2.5	131607	1	pieces	0.660	100	81.2
Q80-2.0	169017			0.530	80	

(\*) Max. load capacities  $F_z$  and  $F_o$  apply for attachments with 2 MPT-Steel beam adaptor plates