

MPT-Girder cleats

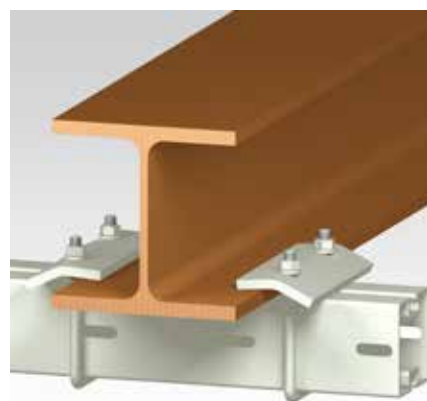
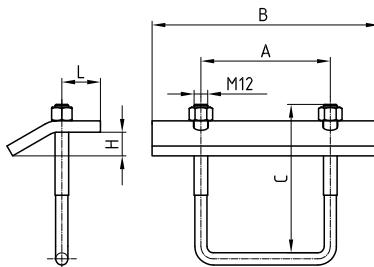
hot-dip galvanised

Field of application

- Attachment of MPT-Support channels to steel girders without drilling or welding

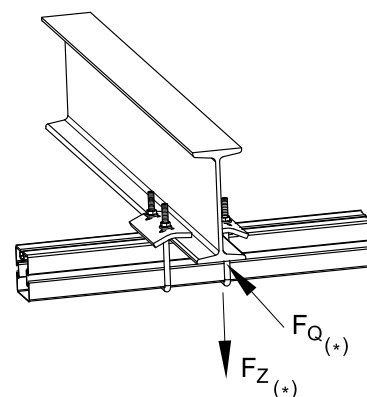
Advantages

- Suitable for steel beams with flange thicknesses up to 25 mm
- Easy to install, pre-assembled kit
- High-level corrosion protection due to standardised hot-dip galvanising ensures flexible implementation outdoors and indoors



Features

For profiles	Max. permitted loading/pair tension F_z [N]	Max. permitted loading/pair lateral to MPT-Support profile F_Q [N]	At tightening torque T_{inst} [Nm]
Q50-2.5	12,000	4,500	33
Q80-2.0			
Q100-2.5,			
Q100-3.5			



(*) Max. load capacities F_z and F_Q apply for attachments with 2 MPT-Girder cleats

For profile	Thread	Part no.	Sales unit	Pack unit	Weight [kg/piece]	Dimensions [mm]				
						A	B	C	H	L
Q50-2.5	M12	151343	1	pieces	1.634	114	200	130	17.4	28.6
Q80-2.0		167937			1.349	94	160	150		34.8
Q100-2.5, Q100-3.5		151344			1.714	114	200	180		28.6