

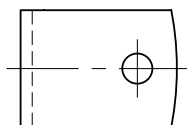
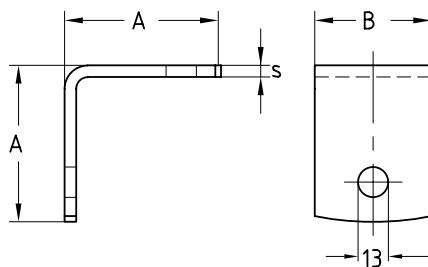
## MPT-Mounting angles 90° hot-dip galvanised

### Field of application

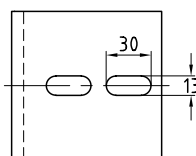
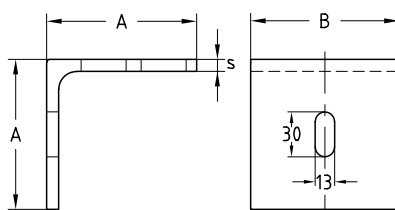
- Approved mounting angles in versions 90° and 90° light-duty model respectively, for corner and angle connections as well as for bracing in combination with MPT-Support profiles Q50, Q80, Q100 and Q150

### Advantages

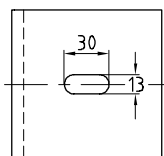
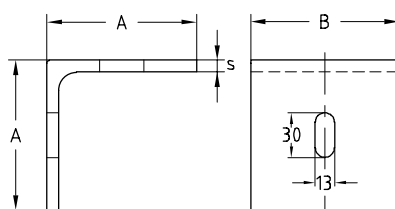
- Stable and good value connecting element for connecting MPT-Support profiles
- High-quality hot-dip galvanising for universal implementation outdoors and indoors



90°, light version, for profile Q50



90°, for profiles Q50, Q100, Q150



90°, for profile Q80

| Design             | For profile                           | Thickness s [mm] | Part no. | Sales unit | Pack unit | Weight [kg/piece] | Dimensions [mm] |     |
|--------------------|---------------------------------------|------------------|----------|------------|-----------|-------------------|-----------------|-----|
|                    |                                       |                  |          |            |           |                   | A               | B   |
| 90°, light version | Q50-2.5                               | 6                | 141460   | 1          | pieces    | 0.239             | 67              | 50  |
| 90°                | Q50-2.5, Q100-2.5, Q100-3.5, Q150-2.5 | 8                | 131605   |            |           | 1..130            | 100             | 100 |
|                    | Q80-2.0                               |                  | 167322   |            |           | 0.780             | 80              | 80  |