

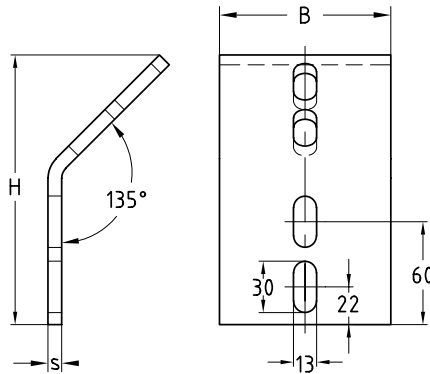
MPT-Mounting angles 45° hot-dip galvanised

Field of application

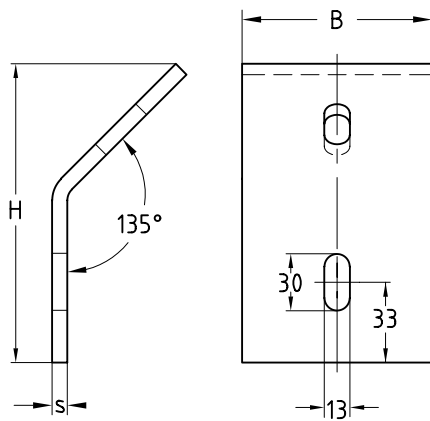
- Proven mounting angles for corner and angle connections as well as for bracing in combination with MPT-Support profiles Q50, Q80, Q100 and Q150
- Additional connection options due to fourfold perforation

Advantages

- Stable and good value connecting element for connecting MPT-Support profiles
- Occuring tolerances are compensated due to oblong holes in the mounting angle
- High-quality hot-dip galvanising for universal implementation outdoors and indoors



4-hole, for profiles Q50, Q100, Q150



2-hole, for profile Q80

| Design | For profile | Thickness s [mm] | Part no. | Sales unit | Pack unit | Weight [kg/piece] | Dimensions [mm] | |
|--------------|--|------------------|----------|------------|-----------|-------------------|-----------------|-------|
| | | | | | | | B | H |
| 4-Angle bars | Q50-2.5, Q100-2.5, Q100-3.5, Q150-2.5 | 8 | 151334 | 1 | pieces | 1.066 | 100 | 157.2 |
| 2-Angle bars | Q80-2.0 | | 167933 | | | 0.830 | 80 | 140.0 |

