

Supporting angles

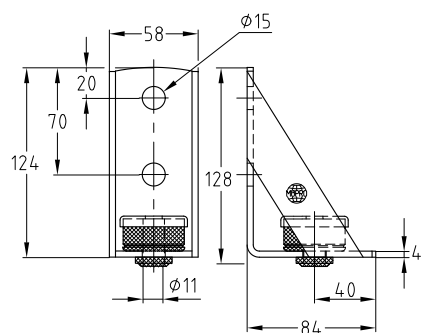
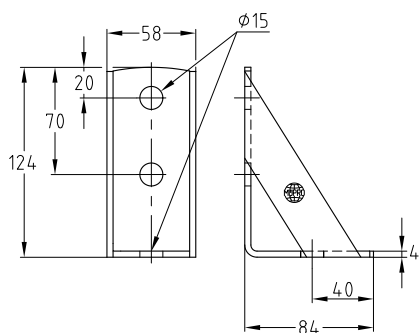
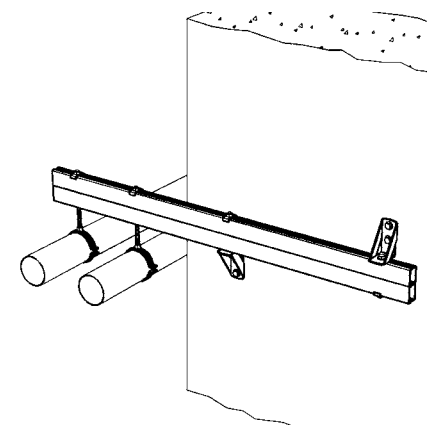
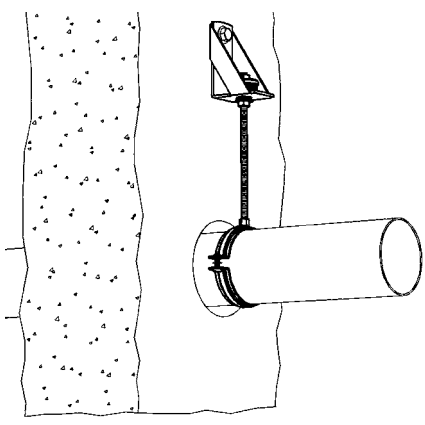
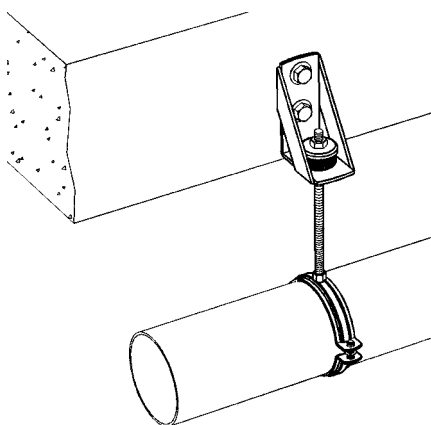
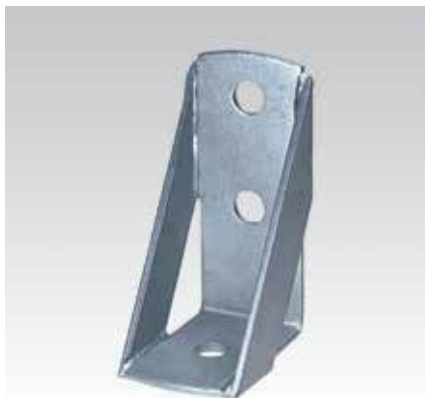
galvanised

Field of application

- For lateral suspension of pipelines on reinforced concrete beams
- As substructure for the attachment of fittings, e.g. water meters

Advantages

- Angle element for higher requirements for stability of mounting structures
- With high-quality vibration control of DÄMMGULAST® Resilient pad
- Usable as bracket for supporting heavy loads close to a wall
- For supporting cross-beams in confined spaces



Features



| Type | Max. recommended load [N] | Average vibration reduction [dB(A)] | Part no. | Sales unit | Pack unit |
|-----------------------------------|---------------------------|-------------------------------------|----------|------------|-----------|
| With DÄMMGULAST® Resilient pad | 1,000 | 17 | 127789 | 25 | pieces |
| Without DÄMMGULAST® Resilient pad | 5,000 | — | 127792 | | |