

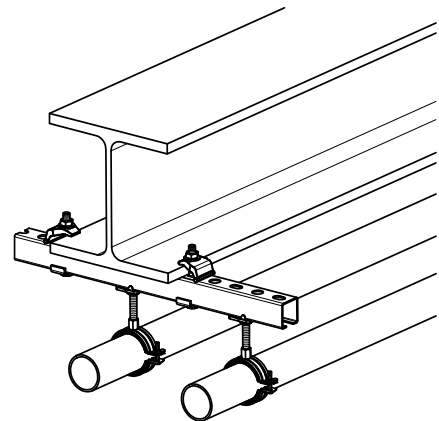
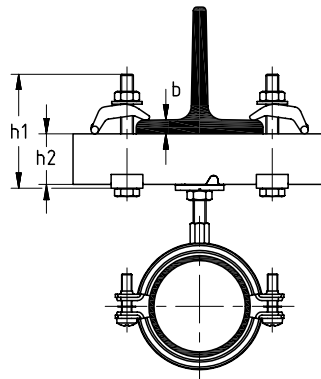
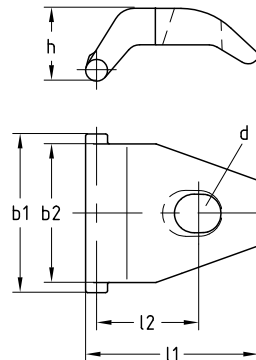
### Clamping claws galvanised

#### Field of application

- Attachment of MPC- and MPR-Support channels to profile steel structures without drilling or welding

#### Advantages


- Large clamping range for universal and quick attachment to profile steel structures
- Safe fastening without drilling or welding
- Suitable for attaching square pipes



#### Features

Size	Max. permitted loading/pair [N]	Breaking load [N]
M10	7,000	45,000
M12	10,000	80,000
M16	12,000	90,000

Size	Max. clamping range b [mm]	Screw length h1 [mm]	Part no.	Sales unit	Pack unit	Dimensions [mm]					
						b1	b2	l1	l2	d	h
M10	1-25	$0,8 \times b + h2 + 33$	157219	100	pieces	43	38	47	28	11	19
M12	1-35	$0,8 \times b + h2 + 40$	157220	50		51		66	37	13	27
M16		$0,8 \times b + h2 + 43$	157221			63	46	65		17	29

 Installation of the clamping claw with the wide side facing the support channel.