

VARIO-Base plates

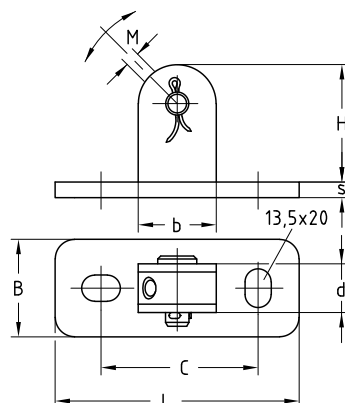
galvanised

Field of application

- For bracing applications
- For stiffening frame constructions
- For bracing wall hanger brackets from the wall or ceiling

Advantages

- Quicker and easier installation on site thanks to pre-assembled components
- Wide range of bracing applications from the wall and ceiling in combination with other VARIO components
- Combinable with the MPC, MPR and MPT-Support channel systems
- Two versions for different applications



Features

| Connecting thread M | Max. admissible tensile load [N] | | |
|------------------------|-------------------------------------|--------|--------|
| | 0° | 45° | 90° |
| M10 | 6,800 | 10,000 | 12,000 |
| M16 | 10,000 | 9,000 | 13,000 |



| Size L x B x s [mm] | Connecting thread M | Hole-centre distance C [mm] | Part no. | Sales unit | Pack unit | Dimensions [mm] | | |
|---------------------------|------------------------|-----------------------------------|---------------|------------|-----------|-----------------|------|------|
| | | | | | | b | d | H |
| 125 x 50 x 8 | M10 | 80.5 | 170450 | 10 | pieces | 40 | 24.5 | 65.8 |
| 165 x 60 x 8 | M16 | 120.5 | 170451 | | | 50 | 36.5 | 86.8 |