

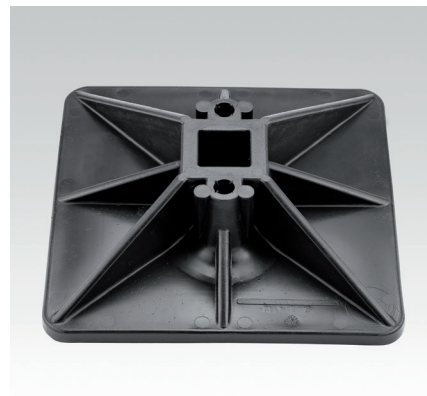
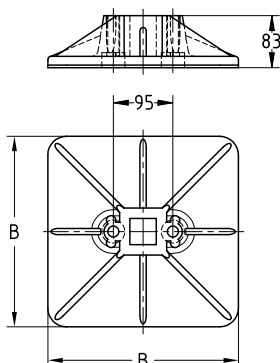
Mounting bases for flat roof installation

Field of application

- Installation of pipes, ventilation ducts, cable trays on flat roofs without roof penetration

Advantages

- Fast and easy installation on site for mounting pipes, cable ducts, cable trays etc.
- High level of flexibility in installation
- Load handling without penetrating the roof membrane
- Good weight distribution and low deadweight
- Retroactive roof repair is simple



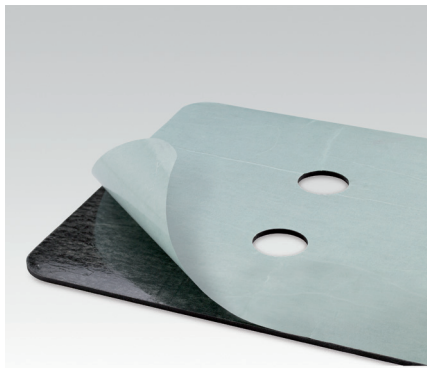
Mounting base

Features

Material	Recycled polypropylene pellets with additives, elastomer
Temperature range	-20 °C to +70 °C
Max. recommended load [N]	10,000 N

Kit consists of:

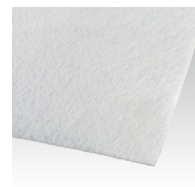
- 1 Mounting base for flat roof installation
- 1 Anti-slip mat (must be attached on the base according to the mounting instruction)



Anti-slip mat

Dimensions B [mm]	Part no.	Sales unit	Pack unit	Weight [kg/piece]
304	165350	1	pieces	2.150
456	165353			4.300

Protective lining



Dimensions B [mm]	Part no.	Sales unit	Pack unit	Weight [kg/piece]
304	173586	1	Stück	0,002
456	173587			0,004



All effects on the load-bearing building structure and the roof insulation must be checked on site. The exact chemical composition of the roof membrane determines its susceptibility to polymer migration. Accordingly, the manufacturer of the roof membrane must provide information on its susceptibility to polymer migration and make specific recommendations.