

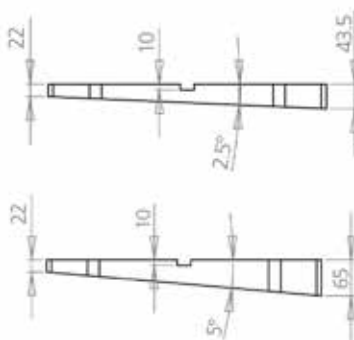
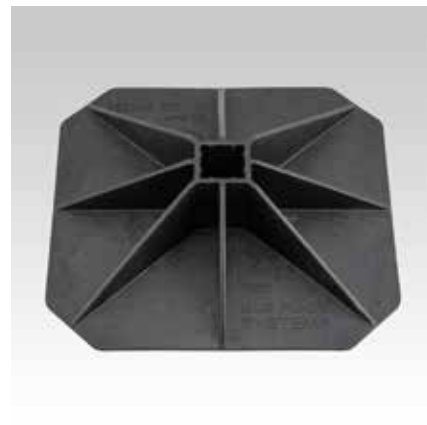
Big Foot 450

Field of application

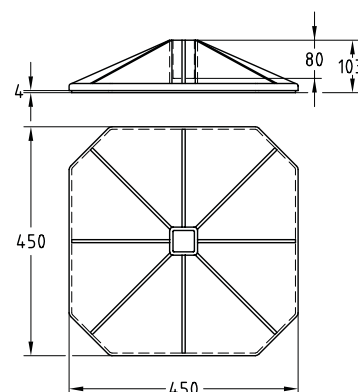
- Laying of large ventilation ducts on flat roofs

Advantages

- For mounting rails 41/41 mm
- The standard MÜPRO fastening material can be used
- Additional protection of the roof skin with separate rubber mats
- The appropriate set can be selected depending on the pitch of the roof (0°, 2.5° or 5°)
- Excellent load distribution
- Versatile areas of application



Angled mat 2.5° and 5°



Set consisting of:

- 1 socket including glued anti-slip mat,
- 1 adapter for rail 41/41.

For part no. 177524, 177525 the corresponding slope mat 2° or 5° is added.

Features

Material	Foot construction made from 100% recycled, glass fiber reinforced nylon
Operating temperature range	-40 °C to +80 °C
Max. recommended load per piece [N]	10,000

Type	Part no.	Sales unit	Pack unit	Weight [kg]
Big Foot set 450	177522	1	pieces	3.69
Big Foot set 450 2,5°	177524			9.54
Big Foot set 450 5°	177525			11.64
Protective fleece	176375			0.07



All effects on load-bearing structures and on the roof insulation must be checked on site.

The exact chemical composition of the membrane determines the susceptibility to polymer migration. Accordingly, the manufacturer of the roofing membrane must provide information on its susceptibility to polymer migration and make specific recommendations.

To prevent polymer migration, we recommend placing a protective fleece underneath.