

MypoTHERM® Kompakt floor tubes

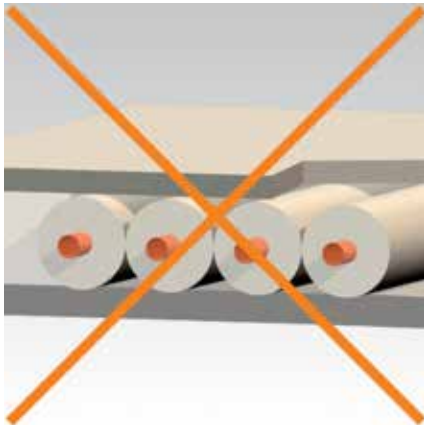
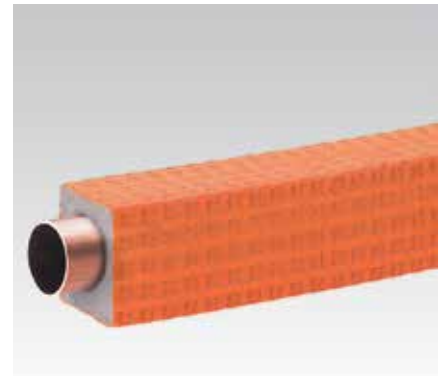
Field of application

- For insulation of pipe work for flooring constructions, e.g. screed

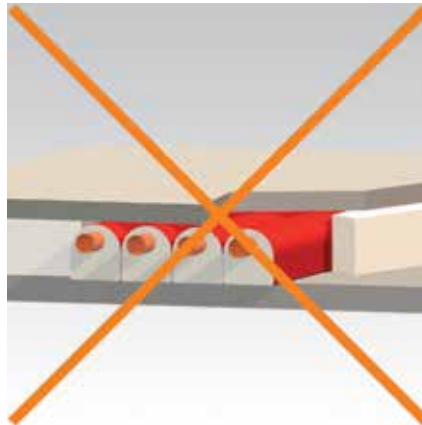
Advantages

- Space-saving overall height
- Rectangular pipe insulation made of polyethylene made of at least 50 % renewable materials (thereby low environmental impact)
- Meets the requirements of the energy saving decree (EnEV)
- Floor/wall insulation with protecting film as vapour barrier

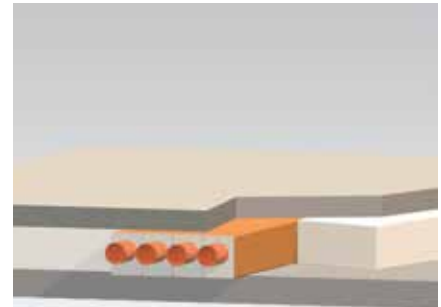
- High damping of structure borne noise
- High vapour diffusion resistance
- Rectangular construction to avoid needless spaces within the screed
- Dioxin-free in case of fire
- Non-ageing and non-putrescible



Insulation tube: large floor height required



Eccentric floor tube: low floor height possible



MypoTHERM® Kompakt floor tube: least floor height possible

Features



Thermal conductivity	$\lambda_{10} = 0.036 \text{ W/mK}$, $\lambda_{40} = 0.040 \text{ W/mK}$, $\lambda_{90} = 0.053 \text{ W/mK}$, insulation thickness 9 mm $\lambda_{10} = 0.038 \text{ W/mK}$, $\lambda_{40} = 0.042 \text{ W/mK}$, $\lambda_{90} = 0.055 \text{ W/mK}$, insulation thickness $\geq 25 \text{ mm}$
Water vapour diffusion resistance	$\mu \geq 16,000$
Temperature range	0 °C to +100 °C
Footfall acoustic insulation (DIN 4109)	up to dB(A) 32 acc. to Fraunhofer Institut, supplementary sheet 2 acc. to DIN 4109
Building material class	E as per EN 13501-1
EG-certificate of Conformity	NMC-0038

Insulation thickness (below pipe) [mm]	Iso-type	Acc. to EnEV 2009	For pipe outer-Ø					Overall height [mm]	Part no.	Sales unit	Pack unit	Contents [m/carton]	Customization
			Copper Cu		Steel FE		Plastic MSV & PEX						
			DN	[mm]	DN	[mm]	[mm]						
9	15-9	Appendix 5 Line 7	10	15	8	13.5	-	31.0	140319	1	carton	170	2-metre-long tubular sections
	18-9		15	18	10	17.2	16	34.0	140320			120	
	22-9		20	22	15	21.3	20	38.0	140321			110	
	28-9		25	28	20	26.9	25	46.5	140322			70	
	35-9		32	35	25	33.7	32	52.5	140323			58	
25	15-25	100 %	10	15	8	13.5	-	52.0	140324	1	carton	100	
	18-25		15	18	10	17.2	16	55.0	140325			84	
	22-25		20	22	15	21.3	20	59.0	140326			72	
	28-25	100 % FE	25	28	20	26.9	25	64.0	140327			58	
38	35-38	100 %	32	35	25	33.7	32	83.0	153857	1	carton	32	
46	42-46		40	42	32	42.4	40	104.0	170835	1	carton	20	