

StaboFix® Fixing system

Field of application

- Carrying case includes complete set to be used on the construction site

Advantages

- Practical basic assortment in the handy carrying case
- Due to the packing of the individual parts in cartons an organized access is possible
- StaboFix® Pliers within the case
- No loose parts lying around on site
- Compact case size of 400 x 300 x 90 mm
- Also available as economy kit: the complete StaboFix® Plumbers case plus 20 StaboFix® Sections

The StaboFix® Fixing system consists of:

- 1 StaboFix® Pliers
- 25 StaboFix® Retaining plates
- 25 StaboFix® Clamps
- 100 StaboFix® Bolts M8 short
- 100 StaboFix® Bolts M8 long
- 100 StaboFix® Drilling screws 4.2 x 16
- 100 StaboFix® Drilling screws 4.8 x 19



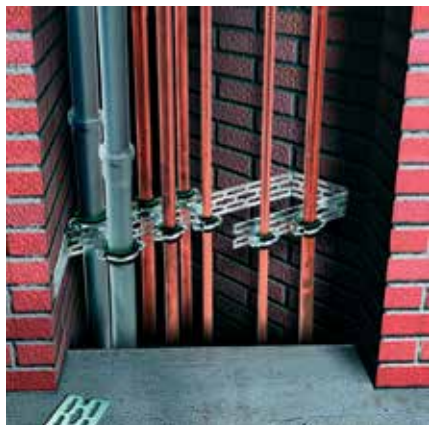
StaboFix® Plumbers case



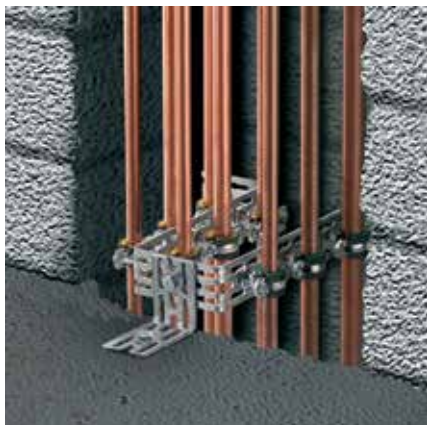
StaboFix® Economy set

	Part no.	Sales unit	Pack unit
StaboFix® Plumbers case	166021	1	pieces
StaboFix® Economy sets consisting of 1 StaboFix® Plumbers case + 20 StaboFix® Sections	166085		set

StaboFix® Fixing system



Installation in a shaft:
Pass-through mounting with two pipe clamps and a threaded pin M8 or M10 for the attachment of parallel pipelines



Installation in a shaft:
Pipe clamps are fitted in no time using the StaboFix® M8 bolt



Washbasin installation:
Installation in tight wall recesses



Washbasin installation:
Everything fitted exactly to gauge



Installation in a wall:
Waste pipe of washing machine



Wall-mounted installation:
Wall-mounted installation using StaboFix® with MPC-Support channels