

MPR-Support channels

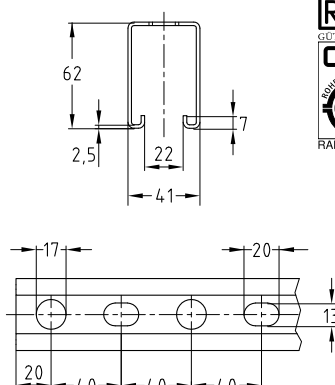
sendzimir galvanised

Field of application

- Ideal for pipe installation as support structure for air ducts in dry interiors
- Variety of mounting options for pre-wall installations and shelves in combination with extensive range of system components
- For indoor use

Advantages

- Quick and efficient attachment of pipe sections and multiple pipe-ways
- High bending stiffness due to the cross-section design
- Scale marks sideways and on the side with the slot simplify the alignment of the attachment elements during installation and facilitate the measuring and cutting to length of the section on site
- For secure fixing that is adjustable laterally and vertically
- For setting up structures with correctly measured static loads by means of diverse connection components
- Interlocking rail slot for positive locking of attachments
- Clean-cut appearance by the use of MPR-protection caps



Profile 41/62/2.5

Features



Profile	Length [mm]	Part no.	Sales unit	Pack unit
41/62/2.5	2,000	150936	1	pieces
	3,040	150978		
	6,000	150979		



For use in areas with requirements on the duration of fire resistance, the boundary conditions set out in the fire test report must be observed.