

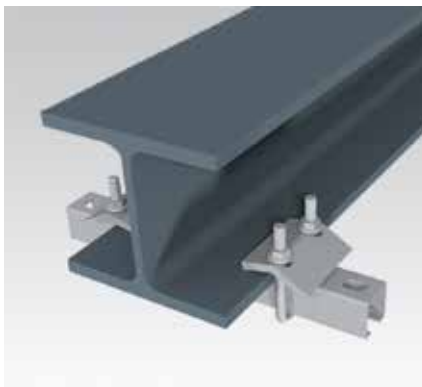
MPC-Girder cleats galvanised

Field of application

- Attachment of MPC-Support channels to steel girders without drilling or welding
- For use in dry interiors

Advantages

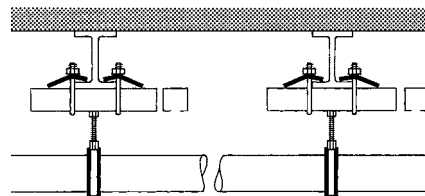
- Attachment to supporting structure without welding or drilling
- Allows subsequent adjustment of the channels along and across the supporting structure
- Suitable for flange thicknesses of common girders
- Easy to install, pre-assembled kit
- Proper attachment of suspended loads on girders
- Approved by VdS



Proof of usability

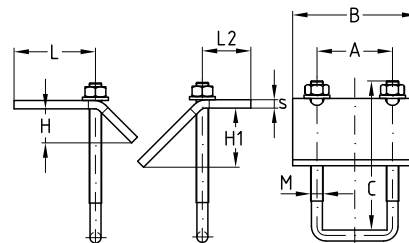


| Girder cleat | Profiles | For threaded connection with hammer head bolts, hammer head fasteners |
|--------------|---|---|
| M8 | 38/24, 38/40, 39/52, 40/60 | M8, M10, M12 |
| M10 | 38/40, 38/80, 39/52, 40/60, (40/80), (40/120) | (M8), M10, M12, M16 |



Features

| For support channels | Thread U-brackets | Max. permitted loading/pair [N] with hammer head bolts, hammer head fasteners | | |
|----------------------|-------------------|---|-------|-------|
| | | M8 | M10 | M12 |
| 38/24, 38/48 | M8 | 1,000 | 2,200 | 5,000 |
| 38/40 | | 2,500 | 2,800 | |
| 39/52 | | 3,000 | 3,300 | 6,700 |
| 40/60 | | 3,500 | 4,000 | 8,300 |
| 38/40, 38/80 | M10 | 2,500 | 2,800 | 5,000 |
| 39/52 | | 3,000 | 3,300 | 6,700 |
| 40/60, 40/80, 40/120 | | 3,500 | 4,000 | 8,300 |



| For support channels | Thread | Spanner width [SW] | Max. clamping thickness [mm] | VdS approved | Part no. | Sales unit | Pack unit | Dimensions [mm] | | | | | | | |
|----------------------|--------|--------------------|------------------------------|--------------|----------|------------|-----------|-----------------|----|-----|------|------|------|------|---|
| | | | | | | | | A | B | C | H | H1 | L | L2 | s |
| 27/18, 28/30 | M6 | 10 | 22 | | 130281 | 50 | pieces | 37 | 60 | 80 | 18.0 | 29.0 | 43.8 | 27.8 | 4 |
| 38/24, 38/40 | M8 | 13 | | ● | 130283 | 20 | | 48 | 70 | | 17.0 | 24.5 | 38.2 | 27.2 | 6 |
| 39/52, 40/60 | | | | ● | 130284 | | | | | 100 | | | | | |
| 38/40, 39/52, 40/60 | M10 | 15 | | ● | 130273 | 15 | | 50 | 80 | | 18.5 | | 39.7 | 30.7 | 8 |
| | | 17 | 42 | | 130272 | | | | | 125 | 19.4 | 43.0 | 64.0 | | |
| 38/80, 40/80 | | 15 | 22 | ● | 130274 | | | | | | 18.5 | 24.5 | 39.7 | | |
| 40/120 | | | | ● | 130277 | | | | | 180 | | | | | |