

### MPC-Mounting angles

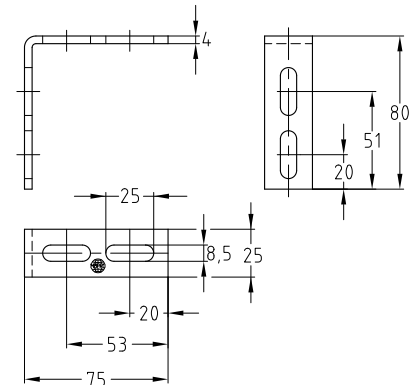
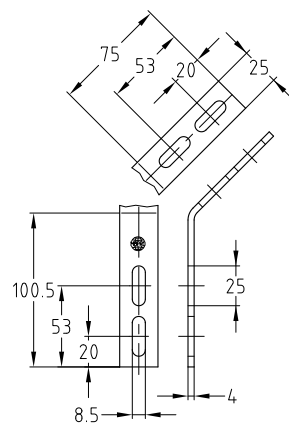
for MPC-Support channels 27/18 and 28/30, galvanised

#### Field of application

- Solid fixing element for construction of pre-wall installations, shelves as well as for channel constructions for mountings of pipelines and air ducts without welding
- Also applicable for direct mounting on walls, ceilings or floors

#### Advantages

- Versatile in use due to oblong holes
- Versatile in use, e.g. as:
  - Angular support bracket
  - Angular load-bearing bracket
  - Connection element
  - Angular bracket
- Multi-purpose component for professional, practical installation solutions



Angle [°]	For support channels	Part no.	Sales unit	Pack unit
45	27/18, 28/30	118753	50	pieces
90		118797		