

## MPC-VARIO-Saddle support

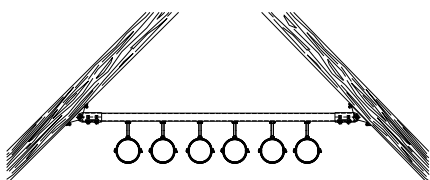
hot-dip galvanised

### Field of application

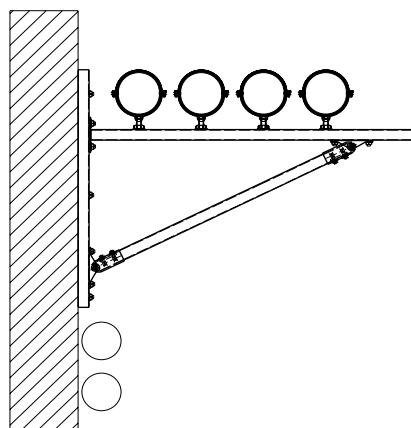
- Ideal for attachment to inclined roof trusses, vaults and in round cable shafts
- Suitable for outdoor use

### Advantages

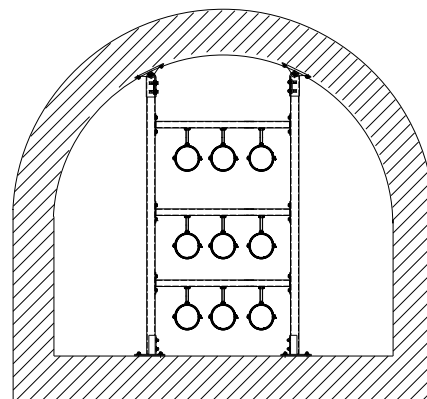
- Variable angle adjustment possible during installation
- Simple and quick installation due to pre-installed double rail nut
- Attachment to the slot of support channels 38/40 possible in all directions



Attachment of a pipe run to an inclined roof truss



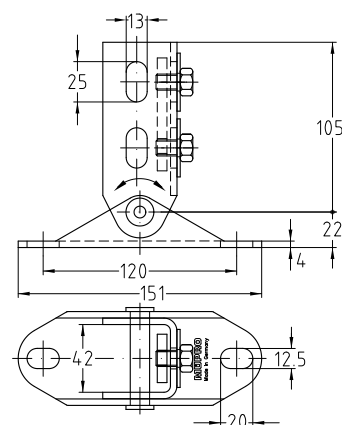
Pipes installed on a MPC-Wall hanger bracket with diagonal strut



Installation of brackets in vaults or round cable ducts and shafts

Completely pre-assembled:

- 1 MPC-VARIO-Saddle support
- 1 Double rail nut
- 2 Hexagonal head bolts M10
- 2 Washers



For support channels	Minimum angle [°]	Part no.	Sales unit	Pack unit
38/40-40/120	20	129647	1	pieces