

MPC-Support channels

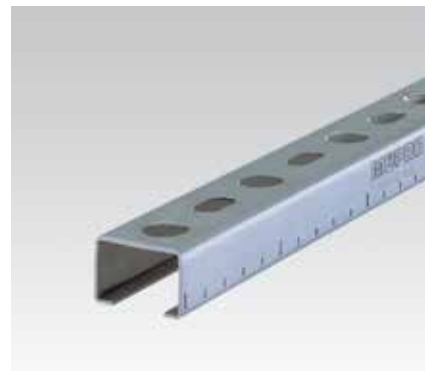
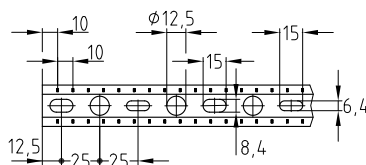
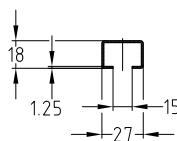
hot-dip galvanised

Field of application

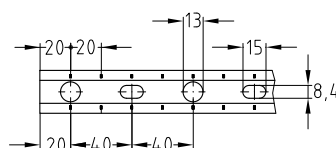
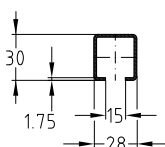
- Ideal for pipe installation as support structure for air ducts
- Variety of mounting options for wall-mounted installations and shelves in combination with extensive range of system components
- Suitable for outdoor use

Advantages

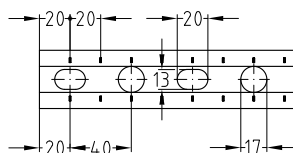
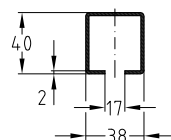
- Quick and efficient attachment of pipe sections and pipeways
- Scale marks sideways and on the side with the slot simplify the alignment of the attachment elements during the installation and facilitate the measuring and cutting to length of the profiles on site
- For secure fixing that is adjustable laterally and vertically
- High bending stiffness due to the good cross-section design
- For setting up structures with correctly measured static loads by means of diverse connection components
- Suitable vibration control elements for all support channels available
- Clean-cut appearance by the use of MPC-protection caps



Profile 27/18



Profile 28/30



Profile 38/40

Profile	Length [mm]	Part no.	Sales unit	Pack unit
27/18	2,000	129909	10	pieces
	6,000	130004	1	
28/30		118990		
38/40	2,000	129916	4	
	6,000	130008	1	



For further technical information please refer to chapter "Technical information".