

### MPC-Lateral angles

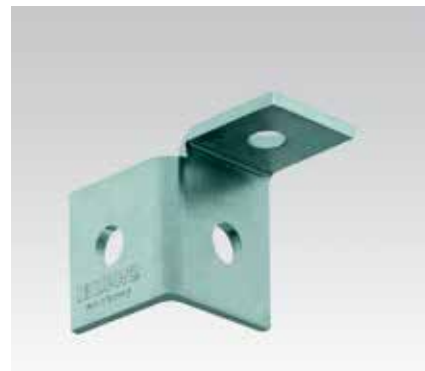
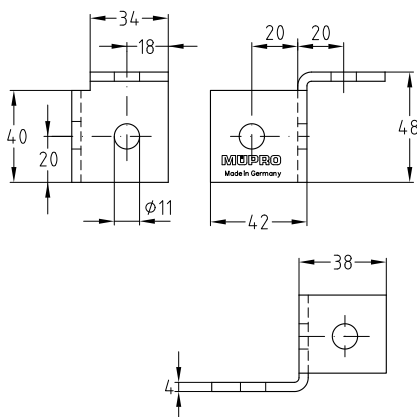
hot-dip galvanised

#### Field of application

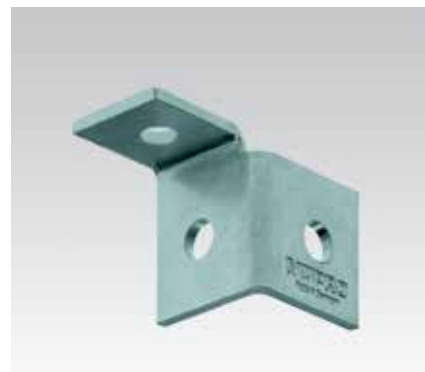
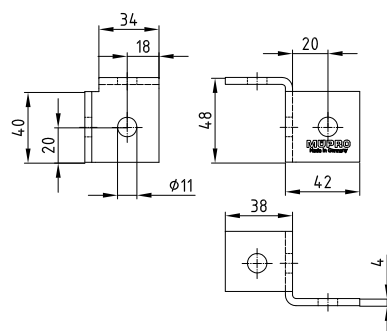
- Connecting elements for the construction of frames, shelves and wall-mounted installations using MPC-Support channels

#### Advantages

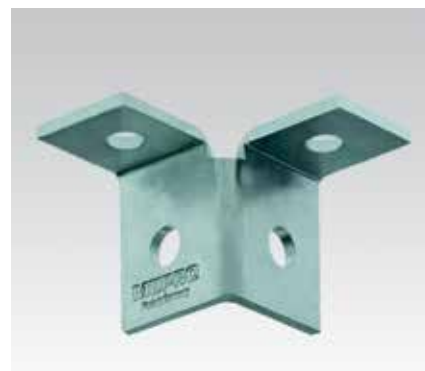
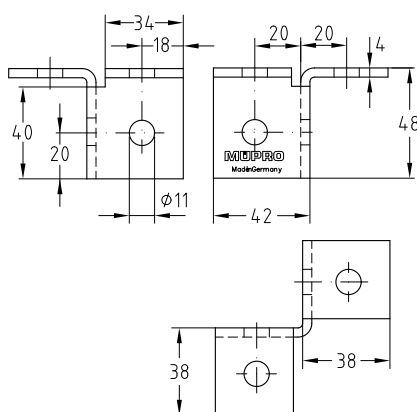
- Creation of solid constructions without welding
- Various mounting options for stable joint and angle connections with MPC-Support channels
- Appropriate combination of elements allows junctions with up to four exit directions
- Great flexibility – a large variety of connections can be made with only a few components
- Quick and simple attachment in combination with MPC-Quick fastener for angle mounting



MPC-Lateral angle, right



MPC-Lateral angle, left



MPC-Lateral angle, double-sided

Alignment	Angle [°]	For support channels	Part no.	Sales unit	Pack unit
Double-sided	90	38/40–40/120	<b>123044</b>	25	pieces
Left			<b>123056</b>		
Right			<b>123064</b>		



Stainless steel version available upon request.