

MPR-Angle connector 90° type S+

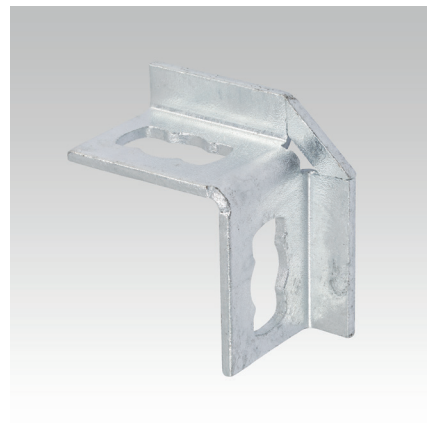
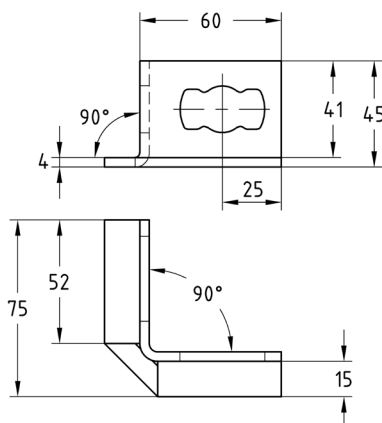
hot-dip galvanised

Field of application

- Stable angle connector for 90° connections in cramped mounting situations
- For indoor and outdoor use

Advantages

- Fast and simple installation of 90° corner joints with the MPR-Connection lock type S+
- The angle connector allows a fast and stable connection, especially of MPR-Support channels 41/21



Design	For support channels	Part no.	Sales unit	Pack unit
1+1	41/21–41/124	175786	25	pieces

