

MPR-T-connection plate type S+ QL

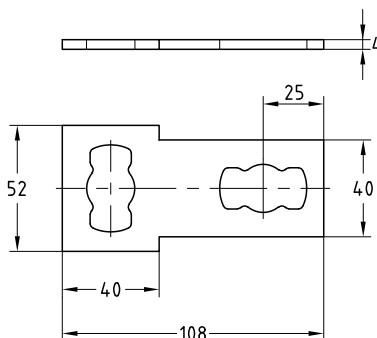
hot-dip galvanised

Field of application

- Stable connection plate for use in cramped mounting situations
- For indoor and outdoor use

Advantages

- Simple and quick connection of T-connections
- The mounting plate enables frame construction in one plane in which the channel slots have the same alignment
- Quick and simple attachment in combination with the MPR-Connection lock type S+



Design	For support channels	Part no.	Sales unit	Pack unit
1+1 QL	41/21-41/124	175784	25	pieces

