

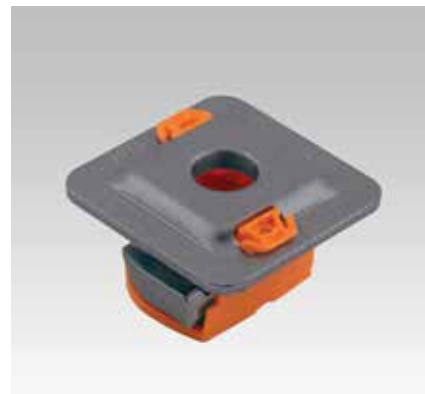
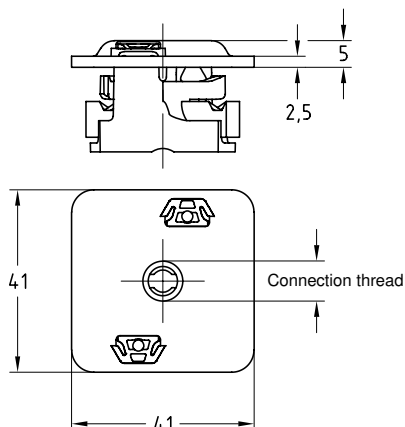
MPR-Quick fasteners type S+ zinc-nickel

Field of application

- For safe and fast connecting of pipe clamps and mounting parts in the rail slot of MPR-Support channels
- For indoor and outdoor use


Advantages

- Simply screw into the rail slot – done
- Safely retained after screwing in, alignable until screw is tightened
- Secure interlocking design for a positive connection with the MPR-Support channels
- No shifting even on vertical rail slots



For support channels	Connecting thread	Part no.	Sales unit	Pack unit
41/21–41/124	M8	165904	25	pieces
	M10	165905		
	M12	165906		

Features

	Max. recommended load F ₁ [N]			Tightening torque [Nm]		
	M8	M10	M12	M8	M10	M12
MPR-Support channels 2.0 mm	4,500	4,500	4,500	9	17	29
MPR-Support channels 2.5 mm		5,000	5,000			

Mounting instructions

