

MPR-3D-Connectors type S+1

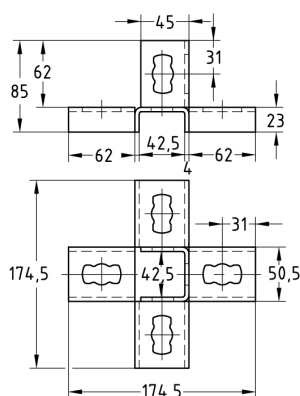
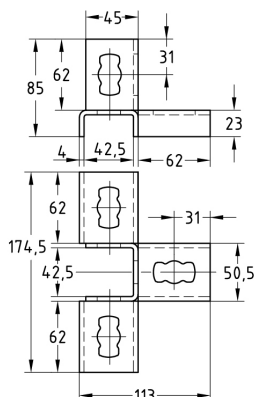
hot-dip galvanised

Field of application

- Fasteners for three-dimensional structures e.g. in shelves and rail constructions
- For indoor and outdoor use

Advantages

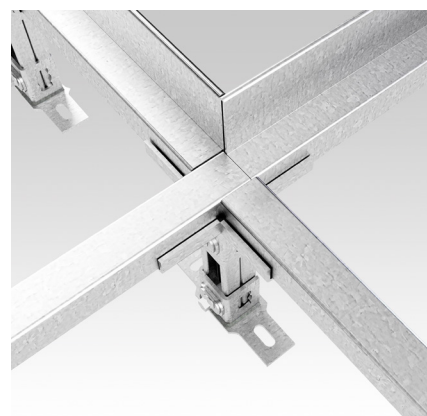
- Fast and simple installation of three-dimensional connections joints in combination with the MPR-Connection lock type S+
- The cross connector enables different rail geometries to be connected at the junction without additional components
- Flexible arrangement of the rail slot on MPR-Support channels 41/21-41/41 with MPR-3D-Connectors type S+1
- Versatile design options using different connector designs
- Applicable for cramped installation conditions



MPR-Mid connector type S+1



MPR-Cross connector type S+1



Design	For support channels	Part no.	Sales unit	Pack unit
Mid connector	41/21, 41/41	176256	10	Pieces
Cross connector		176257		