

Box-section heavy slide guide

hot-dip galvanised

Field of application

- Suitable for wall fixing with horizontal or vertical pipes
- Attachment of pipes with temperature affected, axial expansion
- Variety of installation possibilities (floor-mount, ceiling-mount, wall-mount, rail-mount, cross stay)
- Expansion point attachment for standing and suspended pipes

Advantages

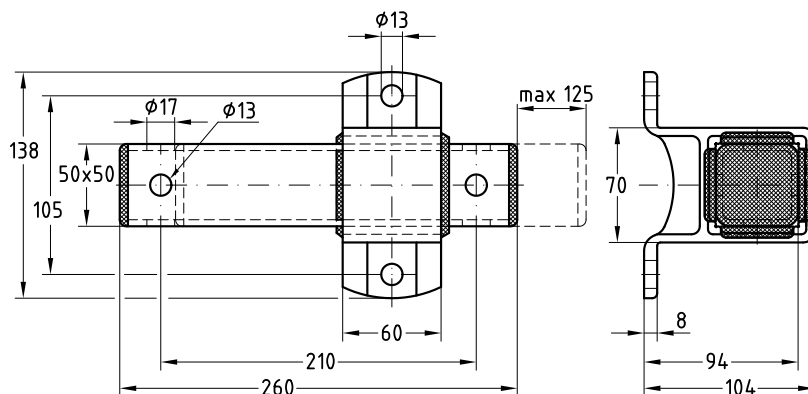
- Smooth-running slide guide for heavy loads
- With long slide travel up to 125 mm for pipelines with large changes in length
- Tilt-proof load distribution in standing and suspended installations
- Variable, height-adjustable pipe clamp attachments using threaded pins
- Two pipe clamps prevent jamming and misalignment
- Connection holes for M12 and M16



Features



Max. recommended load [N] 7,800



Max. sliding length [mm]	Part no.	Sales unit	Pack unit
125	133184	1	pieces



Also available in stainless steel version upon request.