

STATO® Clamps
two-piece, galvanised

Field of application

- Perfect for use as an anchor point clamp in version without vibration control lining
- Attachment of pipelines with higher load requirements
- In combination with the STATO® Bracket useable as the ideal pipe-line anchor point

Advantages

- High-duty, two-part clamp
- The 2 locking screws allow adjustments to accommodate a greater variation in pipe diameter
- Also available with vibration control lining DÄMMGULAST® yellow
- The matching clamp for STATO® Bracket
- Supplied with connecting screws, nuts and captive washers




Nominal size pipe outer diameter		Without lining (anchor point clamp)			with DÄMMGULAST®				
[inch]	[mm]	Part no.	Sales unit	Pack unit	Part no.	Sales unit	Pack unit		
2	60.3	168050	12	pieces	129214	12	pieces		
	70.0	168051			129263				
2½	76.1	168052			129215				
	82.5	168053			129267				
3	88.9	168054			129235				
	101.6	168055			129187				
4	108–110	168056			6		129191	6	
	114.3	168057					129243		
5	125–127	168058					129195		
	133.0	168059					129199		
6	139.7	168060					129255		
	152.4	168061					129202		
8	159.0	168062	129205						
	165.0	168063	129260						
	168.3	168064	129211						
	177.8	168065	129212						
	212.0	168066	129221						
	219.1	168067	129224						
	244.5	168068	129227						
	267.0	168069	129231						
	273.0	168070	129233						

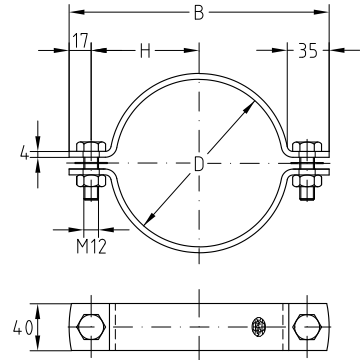
! If required, the two types of STATO® clamps can be produced specifically in accordance with the external diameter of the pipelines or foam glass acoustic cladding, enabling axial movement of the pipeline in the clamp (guide or sliding clamp) or acoustic cladding to be stored with just a low contact pressure. In combination with STATO® Brackets, a maximum of 3 STATO® Clamps without linings or a maximum of 2 STATO® Clamps with DÄMMGULAST® linings may be mounted per set of brackets. For a pipe outer diameter of 315 mm upwards, the STATO® Bracket heavy-duty version must be used.

STATO® Clamps two-piece, galvanised

Features

Max. recommended tensile load [N]	without lining	10,000
Max. recommended tensile load [N]	with DÄMMGULAST®	4,660
Max. recommended load axial [N]		5,500

 Max. recommended load axial [N] in combination with wooden blocks please refer to page 6/9.



Nominal size pipe outer diameter		Locking bolts SW	Without lining (anchor point clamp)			with DÄMMGULAST®		
[inch]	[mm]		Part no.	B	H	Part no.	B	H
2	60.3	M12	168050	140	53	129214	148	57
	70.0		168051	148	57	129263	158	62
2½	76.1		168052	154	60	129215	164	65
	82.5		168053	161	64	129267	171	68
3	88.9		168054	168	67	129235	177	71
	101.6		168055	182	74	129187	190	78
4	108–110		168056	188	78	129191	198	82
	114.3		168057	195	80	129243	202	84
	125–127		168058	206	86	129195	213	90
	133.0		168059	213	90	129199	221	94
5	139.7		168060	220	93	129255	228	97
	152.4		168061	232	99	129202	240	103
	159.0		168062	239	103	129205	247	107
6	165.0		168063	246	106	129260	253	110
	168.3		168064	248	107	129211	256	111
	177.8		168065	258	112	129212	266	116
8	212.0	168066	293	130	129221	300	133	
	219.1	168067	300	133	129224	307	137	
	244.5	168068	326	146	129227	333	149	
	267.0	168069	348	157	129231	355	161	
	273.0	168070	354	160	129233	361	164	