

### PHONOLYT® Anchor points for pipes double kit, galvanised

#### Field of application

- Ideal component for vibration-controlled pipe anchor points to meet the vibration control requirements of **DIN 4109** and **VDI 4100**
- Suitable for ceiling, wall or floor-mounting
- Floor mounting of pipe and duct lines
- Ideal as vibration-isolated pipeline anchor point for downpipe support or riser pipes

#### Advantages

- Isolates the pipe acoustically from the building structure
- Practical downpipe support with perfect vibration decoupling

- Double kit for high loadings
- Special feature: **Also approved for alternating load directions on plastic piping**
- Lowest possible distance from the building structure attainable
- Continuously adjustable wall distance due to threaded pins
- Practical design facilitates installation
- **Fixed point for all pipe types**, regardless of pipe flanges and bushings
- Sound level reduction by up to 40 dB(A)
- Silicone-free

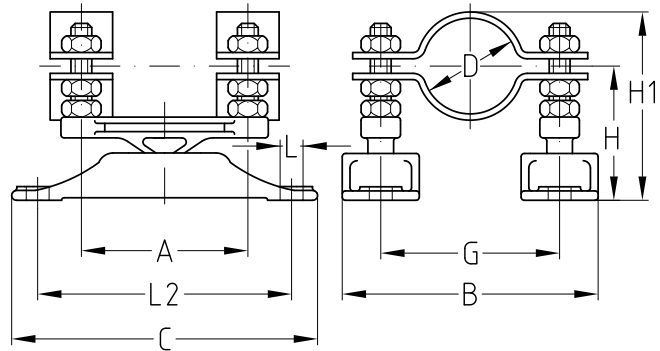


#### Double kit dB(A) 27, consisting of:

- 2 PHONOLYT® Vibration decoupler dB(A) 27, M10
- 2 STATO® Clamps, 30 x 3 mm, without lining, galvanised
- 4 Threaded pins M10
- 12 Hexagonal head nuts M10

#### Double kit dB(A) 40, consisting of:

- 2 PHONOLYT® Vibration decoupler dB(A) 40, M12
- 2 STATO® Clamps, 40 x 4 mm, without lining, galvanised
- 4 Threaded pins M12
- 12 Hexagonal head nuts M12



#### Features



Type	Size [mm]	Nominal size DN	Clamping range [mm]	Threaded pin [mm]	Part no.	Sales unit	Pack unit	Dimensions [mm]							
								A	B	C	G	H	H1	Ø L	L2
dB(A) 27	32.0	25	32–35	M10 x 55	<b>120352</b>	1	Stück	80	98	147	61	62–71	82–91	11	122
	42.4	32	40–42.4		<b>120356</b>			112	75	86–95					
	48.3	40	48.3–50		<b>120360</b>			117	80	89–98					
	56.0	50	56–60.3		<b>120371</b>			129	92	96–105					
dB(A) 40	60.3	65/70	60.3–61	M12 x 80	<b>120408</b>	1	Stück	126	163	227	103	95–102	130–138	13	194
	76.1		76.1–80	M12 x 100	<b>120413</b>			180	120	95–122	139–167				
	82.5	80	80–83	<b>168462</b>	187			127	140–168						
	88.9	90	88–90	<b>120375</b>	193			133	146–174						
	110.0	100	110–112	M12 x 110	<b>120391</b>			217	157	95–132	157–190				
	125.0	125	125–127	<b>120365</b>	231			171	164–202						
	133.0		133–135	<b>120395</b>	243			183	169–207						
	139.7		137–140	<b>168464</b>	246			186							
	159.0	150	159–162	M12 x 130	<b>120399</b>			269	209	95–152	182–240				
	200.0	200	199–202	M12 x 150	<b>168465</b>			284	224	95–172	199–276				
	212.0		210–212	<b>120403</b>	319			259	207–285						

Please refer to the “Technical information” chapter for permissible loads.