

Swivel hangers galvanised

Field of application

- Attachment solution for suspended pipes – allows axial and lateral pipe movements
- Attachment of pipes with thermal, axial expansion
- Especially suitable for large ceiling distances
- For the installation of swivel hangers together with MPR-Quick fasteners please follow the installation instructions accompanying the product

Advantages

- 360° degree of freedom
- Large deflection from the vertical
- Appropriate threaded rod lengths allow the pipes to be set to the desired height
- Screw-in depth of thread hanger allows precise height adjustment
- Screw-in depth visible through inspection hole (long version)
- Short version for low overall height



Swivel hanger, short



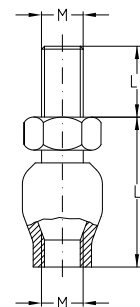
Swivel hanger, long



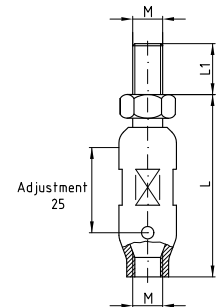
Features



Connecting thread	Max. recommended load [N]
M8	2,400
M10	3,000
M12	3,500



short version



long version

Type	Connecting thread	Overall height L [mm]	Threaded length L ₁ [mm]	Deflection from the vertical	Height adjustment up to [mm]	Part no.	Sales unit	Pack unit	
Short	M8	34	18	up to 12°	–	120231	100	pieces	
	M10	35				120227			
Long, with inspection hole	M12	70	20		up to 22°	25	120211		50
	M10	61	57				120208		
	M8	60	18				120204		
Long, greater deflection	M10	61					120223		
						120196			

! For secure tilt-free pipe guides two swivel hangers – one at the top and one at the bottom – must be considered for each attachment point.

The threaded rod must be secured against loosening by the use of locknuts.