

## Wooden blocks

### Field of application

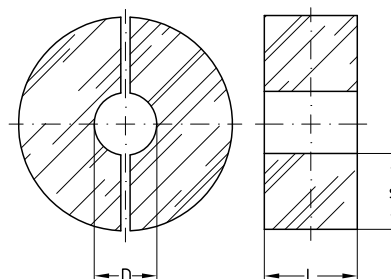
- Thermally decoupled attachment of chilled water pipes
- Insulation of anchoring point for chilled water pipes
- For friction attachments taking up axial pipe forces
- For indoor use

### Advantages

- Direct between pipe clamp and cold pipe: decreased heat flux between pipe and environment
- Simple attachment to the pipe insulation
- Suitable for all pipe materials
- Attachment possible at any point on a smooth pipe



Anchor point solution on chilled water pipe with STATO® Clamps and STATO® Brackets



### Features

|  |                |
|--|----------------|
| Max. permitted loading axial [N]<br>(mounted with 3 STATO® Clamps and STATO® Brackets) | 8,000          |
| Temperature range  | 0 °C to +90 °C |
| Shell length L [mm]  | 200            |

| Pipe outer diameter [mm] | Insulation thickness 20 mm |              | Insulation thickness 30 mm |              |
|--------------------------|----------------------------|--------------|----------------------------|--------------|
|                          | Wooden block               | STATO® Clamp | Wooden block               | STATO® Clamp |
| 17.2                     | 115826                     | 168289       | 115835                     | 168052       |
| 21.3                     | 115874                     | 168050       | 115883                     | 168053       |
| 26.9                     | 115951                     | 168051       | 115960                     | 168054       |
| 33.7                     | 116174                     | 168052       | 116183                     | 164518       |
| 42.4                     | 116286                     | 168053       | 116295                     | 168055       |
| 48.3                     | 116325                     | 168054       | 116334                     | 168056       |
| 60.3                     | 116445                     | 168055       | 116454                     | 129431       |
| 64.0                     | 116484                     | 168056       | 116493                     | 168058       |
| 76.1                     | 116526                     | 168057       | 116538                     | 129291       |
| 88.9                     | 116565                     | 168290       | 116574                     | 153945       |
| 102.0                    | 115495                     | 147107       | 115504                     | 168292       |
| 108.0                    | 115531                     | 153945       | 115540                     | 168064       |
| 110.0                    | 115566                     | 168061       | 115575                     | 153946       |
| 114.3                    | 115602                     | 168291       | 115611                     | 153946       |
| 125.0                    | 115638                     | 168063       | 115647                     | 138322       |
| 133.0                    | 115673                     | 153946       | 115682                     | 129306       |
| 139.7                    | 115709                     | 138235       | 115718                     | 153947       |
| 159.0                    | 115748                     | 153947       | 115757                     | 168067       |
| 168.3                    | 115787                     | 129309       | 115796                     | 152207       |
| 219.1                    | 115910                     | 129326       | 115919                     | 129331       |
| 267.0                    | 115987                     | 129333       | 115996                     | 129343       |
| 273.0                    | 116023                     | 129334       | 116032                     | 129398       |



Pack size: 1 unit = 2 half-blocks.

On site, wooden blocks need to be insulated against vapor diffusion at least in same quality as sectional pipe insulation.

When choosing the shell thickness, the dew point needs to be considered.

Mount STATO® Clamps with a tightening torque of 50 Nm.

Other shell lengths, diameters and insulation thickness can be produced according to customers specifications upon request.