

Guide rails galvanised

Field of application

- Ideally suitable for pipes with large thermal, axial expansion
- Suitable for ceiling, suspension, risers and ground installations

Advantages

- Guide rail with long slide travel for versatile installation
- Perfect solution for installation under cramped conditions due to the low overall height of 28 mm (guide rail M8)
- Smooth-sliding, abrasion-resistant sliding shoe



Guide rail M8



Guide rail M10



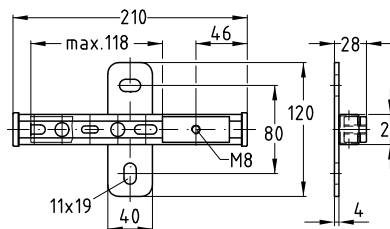
Guide rail M8



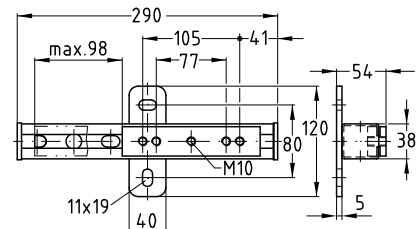
Guide rail M10

Features

Max. recommended load [N] 1,000



Guide rail M8



Guide rail M10

Connecting thread	Max. slide travel [mm]	Part no.	Sales unit	Pack unit
M8	118	112066	25	pieces
M10	98	112062		

Attention: Mind the tightening torque specified for the locknuts: connecting thread M8 16 Nm, connecting thread M10 18 Nm.