

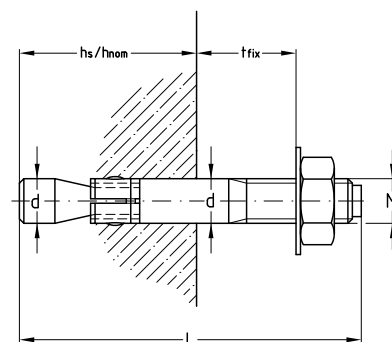
Through anchors

Field of application

- For anchorages of medium-weight loads in non-cracked concrete
- Attachment of metal and wood constructions, handrails, shelves, cable ducts and ventilation
- Also applicable in hard natural pipes stone

Advantages

- **Quick handling:** Simply insert and tighten
- Practical through-fitting
- Splaying controlled by the tightening torque
- High security due to increasing splaying with increase in load
- European Technical Assessment (ETA) for non-cracked concrete



Features



			Uncracked concrete with central tensile load ETA assessment	
Type	Drill-Ø D [mm]	Drilled hole depth [mm]	Setting depth h _s [mm]	Approved load ¹⁾ [kN]
St 8-45	10	70	55	5.7
St 10-10			60	7.6
St 10-20				
St 10-50	12	90	80	11.9
St 12-65				
St 16-30	16	110	98	17.2

¹⁾ The approved loading applies for single anchors in concrete strength class \geq C20/25 (B25) for axially applied tension without the influence of axial and edge spacings. The safety coefficient according to ETAG is included. The European Technical Assessment shall be observed for dimensioning.

Type	Connecting thread	Clamping thickness t_{fix} [mm]	Overall length [mm]	Material	Part no.	Sales unit	Pack unit
St 8–45	M8	45	110	V4A	129518	100	pieces
St 10–10	M10	10	85		129489	50	
St 10–20		20			129494		
St 10–50		50	125		129492		
St 12–65	M12	65	160		129504	25	
St 16–30	M16	30	150		129488	20	