

MPC-Quick fasteners

Field of application

- Secure and easy installation in slot of MPC-Support channel in order to attach mounting accessories
- Angle mounting for fast and efficient installation of brackets and mounting angles

Advantages

- Time-saving attachment in the channel slot, even if subsequently fitted between existing pipe sections
- Simple and secure handling: insert in the MPC-Support channels, turn and the MPC-Quick fastener is fixed. No slipping, no falling out
- Adjustment marks on the side facilitate its positioning in the support channel
- High quality and load capacity
- Suitable for MPC-Support channel profiles 38/40 and 40/60



For angle mounting



With internal thread

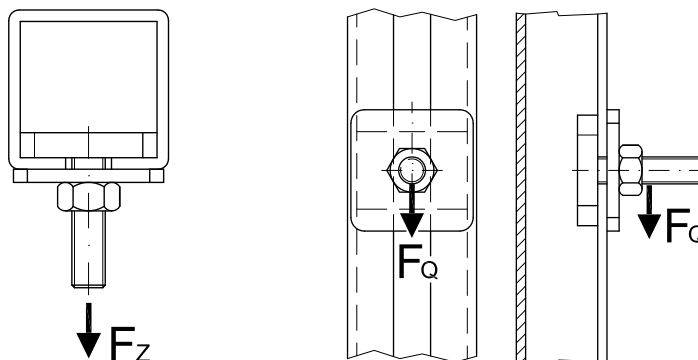


Features



Type	For support channels	Connecting thread	Material	Part no.	Sales unit	Pack unit
With internal thread	38/40, 40/60	M8	V2A	120866	50	pieces
		M10		120830		
For angle mounting	38/40, 40/60	M8		120794		
		M10		120786		

MPC-Quick fasteners



For support channels	MPC-Quick fastener			
	Connecting thread	Max. recommended tensile load Fz [N]	Max. recommended transverse load Fq (displacement) [N]	At a tightening torque of [Nm]
38/40	M8	2,800	1,000	20
	M10			25
40/60	M8	4,000		20
	M10			25

