

### Construction bracket

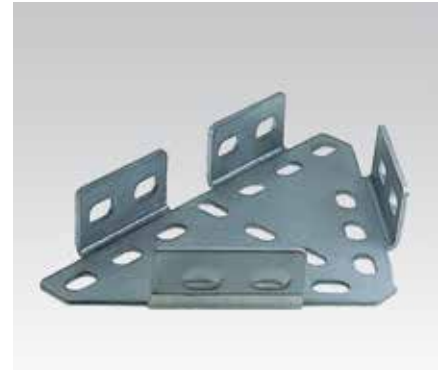
#### Field of application

- Ideal connecting element for the construction of cross-beams, frames and shelving systems
- For direct mounting on ceilings, walls and floors or for installation with MPC- and MPR-Support channels used as:
  - Angular support bracket
  - Angular load-bearing bracket
  - Basic prop
  - Angle bracket
  - Cross connection

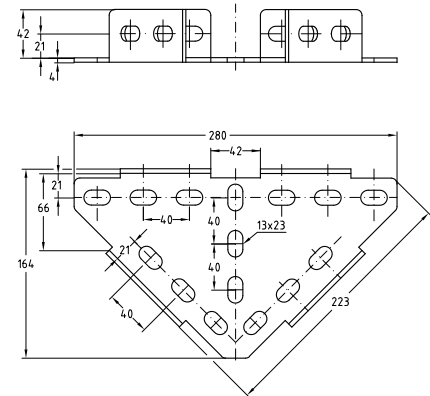
- Transverse support angle
- Support angle
- Connection element
- Angular bracket

#### Advantages

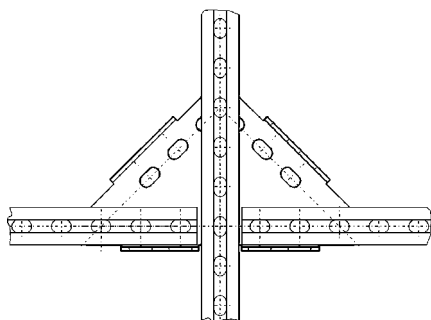
- Great variety of mounting possibilities when used with MPC- and MPR-Support channels
- Results in rigid junction and angle connections
- For any direction of channel opening



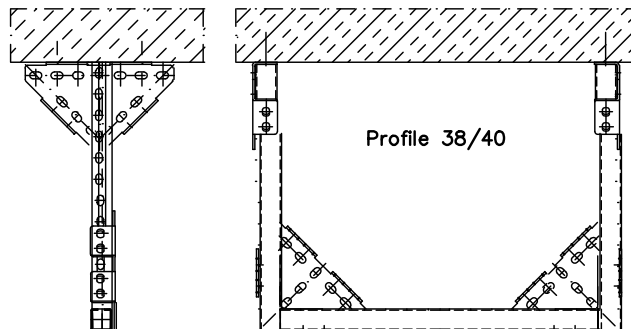
Size [mm]	For support channels	Material	Part no.	Sales unit	Pack unit
280 x 164 x 4	38/40, 40/60, 41/21–41/124	V2A	113595	1	pieces



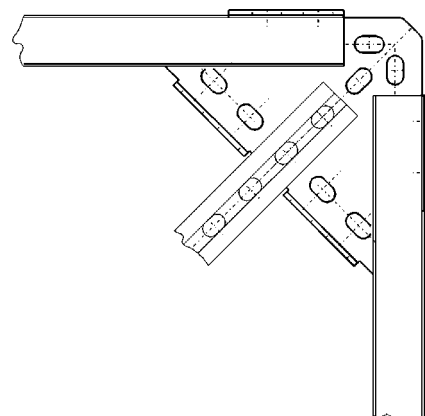
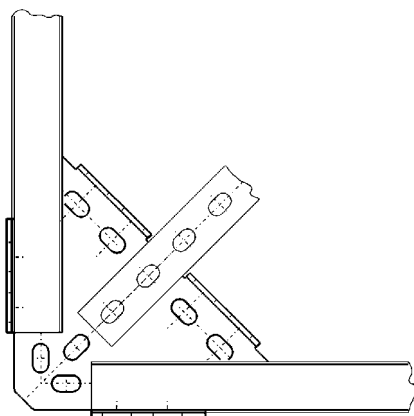
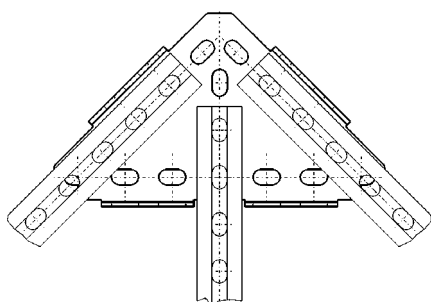
## Construction bracket



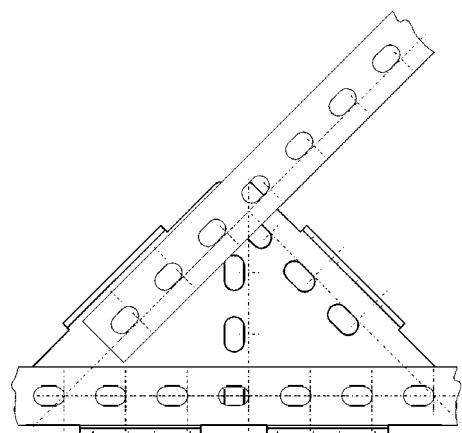
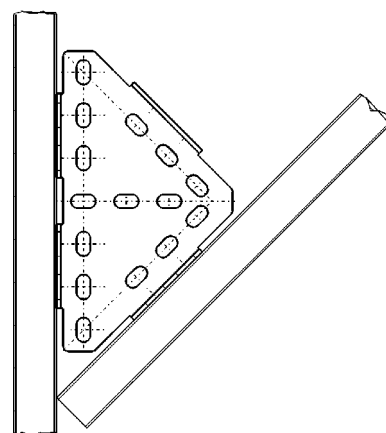
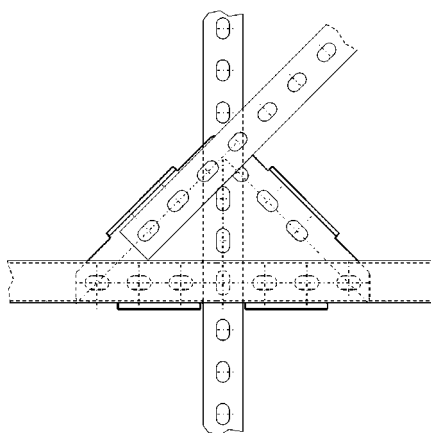
**As a cross-connection**, also realizable with continuous MPC-Support channels



**As transverse support**; for additional lateral rigidity



**As junction plate**; as the mounting slot of the MPC-Support channels can be aligned in any position, is guaranteed a variety of mounting arrangements for an optimum solution to any problem.



**As 45° support**; optional attachment with internally or externally positioned MPC-Support channel