

Through anchors galvanised

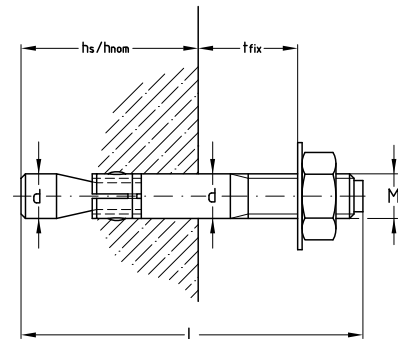
Field of application

- For anchorages of medium-weight loads in non-cracked concrete
- Attachment of metal and wood constructions, handrails, shelves and cable ducts
- Also applicable in hard natural stone

- Splaying controlled by the tightening torque
- High security due to increasing splaying with increase in load
- European Technical Assessment (ETA) for non-cracked concrete

Advantages

- Quick handling: simply insert and tighten
- Practical through-fitting



Features




Type	Connecting thread	Clamping thickness t_{fix} [mm]	Overall length L [mm]	Part no.	Sales unit	Pack unit
St 6-10	M6	10	67	129513	100	pieces
St 6-25		25	82	129514		
St 8-10	M8	10	75	129516	50	
St 8-20		20	85	129517		
St 8-45		45	110	129519		
St 10-10	M10	10	85	129490	25	
St 10-20		20	95	129491		
St 10-50		50	125	129493		
St 12-20	M12	20	115	129499	20	
St 12-30		30	125	129502		
St 12-65		65	160	129505		
St 12-85		85	180	129506		
St 12-105		105	200	129495		
St 12-145		145	240	129496		
St 12-160		160	255	129497		
St 12-190		190	285	129498		
St 12-230		230	325	129500		
St 12-260		260	355	129501		
St 16-30	M16	30	150	129511	15	
St 16-80		80	200	129512		
St 16-100		100	220	129507		

Please refer to chapter "Stainless steel" for the stainless steel version.

Through anchors galvanised

Type	Drill diameter d [mm]	Drilled hole depth [mm]	Uncracked concrete with central tensile load ETA assessment		
			Standard anchoring depth h_{ef} [mm]	Setting depth h_s [mm]	Approved load ¹⁾ [kN]
St 6-10	6	55	40	49	4,1
St 6-25					
St 8-10	8	65	44	56	5,7
St 8-20					
St 8-45					
St 10-10	10	70	48	62	7,6
St 10-20					
St 10-50					
St 12-20	12	90	65	82	12,6
St 12-30					
St 12-65					
St 12-85					
St 12-105					
St 12-145					
St 12-160					
St 12-190					
St 12-230					
St 12-260					
St 16-30	16	110	82	102	17,8
St 16-80					
St 16-100					

¹⁾ The admissible loads apply for single anchors in concrete strength class $\geq C20/25$ for axially applied tension without the influence of axial and edge spacings. The safety coefficient according to ETA is included. The European Technical Assessment shall be observed for dimensioning.
Reduced setting depth possible at reduced loads; see please the European Technical Assessment 05/0162

 Please refer to chapter "Technical information" for additional characteristic values of plugs.

