

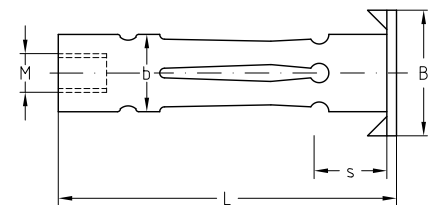
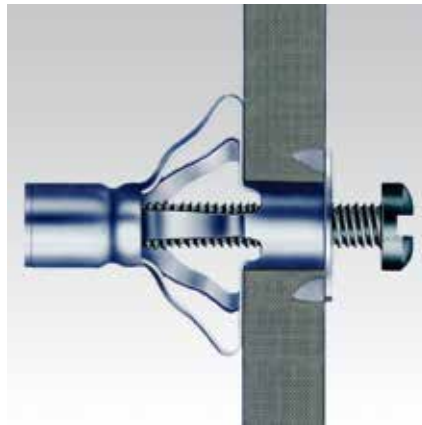
Cavity plugs galvanised

Field of application

- For mounting on cavity panels and drywall plasterboards made of gypsum, fiber metal sheets, chipboards and sheet metal

Advantages


- Ideal solution for attachment to thin-walled panels
- Even all-round splaying ensures load distribution at the attachment point
- Large supporting surface for high loading capacity
- Can also be used in small cavities
- Available in a handy case with fitting tools



Type	Connecting thread	Clamping thickness S [mm]	Drilling hole-Ø b [mm]	Length [mm]	B [mm]	Matching tension bolt	Part no.	Sales unit	Pack unit
4-3-14/32	M4	3-14	8	32	13.0	M4 x 40	116997	100	pieces
4-16-20/45		16-20		45		M4 x 55	117000		
5-6-12/35	M5	6-12	12	35	16.0	M5 x 45	117003		
5-3-16/50		3-16		50		M5 x 60	117009		
5-16-32/60		16-32		60		M5 x 70	117015		
6-1-5/16	M6	1-5		16	17.5	M6 x 25	116994		
6-3-16/50		3-16		50		M6 x 60	117021		
6-16-32/60		16-32		60		M6 x 70	117030		
8-3-16/50	M8	3-16	13	50		M8 x 60	117036		
8-16-32/60		16-32		60		M8 x 75	117042		

Features

Size	Max. recommended tensile load [N]		
	Plasterboard	Wood panels	Cement fibre slabs
M4	160	210	360
M5	190	260	410
M6	210	290	430
M8		310	460

 For suitable bolts please refer to chapter „Accessories“.