

### Screws for concrete MMS-plus

type Multi-Monti®-plus, galvanised

#### Field of application

- For anchorages free of expansion pressure in cracked and non-cracked concrete
- Direct mounting of attachment parts, such as brackets, support channels, base plates, etc.
- Also applicable in lime sand brick, solid brick, clinker and natural stone

#### Advantages

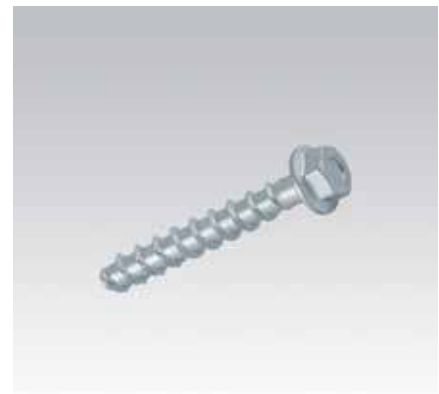
- More than 25 % reduction of assembly time per attachment point
- Versatile use in concrete and other solid building materials
- High security, no splaying effect – thus can be placed close to the edge and to other screws
- High load capacity due to form lock
- Easy to withdraw, facilitates corrections during installation
- No additional mounting or setting tools required
- European Technical Assessment for cracked and uncracked concrete
- Fire protection in concrete
- Suitable for the installation of gas mains according to the TRGI (Technical Rules for Gas Installations)
- Two effective anchorage depths for greater flexibility



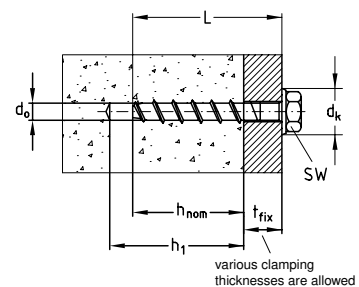
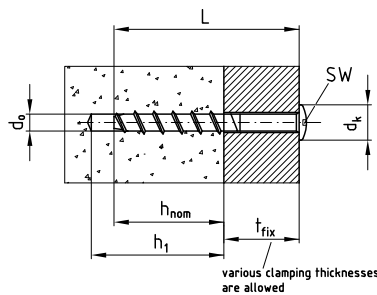
Screw for concrete with panhead (large) type MS



Screw for concrete with panhead (small) type P





Screw for concrete with hexagonal head and pressed washer type SS



Design	Thread-Ø [mm]	Length L [mm]	Washer-Ø dk [mm]	Head-Ø dk [mm]	Part no.	Sales unit	Pack unit
With hexagonal head and pressed washer type SS	7.5	40	14.0	-	166632	100	pieces
		50			166633		
		60			166634		
		80			166635		
		100			166636		
	10.0	70	19.0		166637	25	
		100			166638		
		120			166639		
		172692					
With panhead (small) type P	7.5	40	-	14.0	166646	100	
		50			166647		
		60			166648		
With panhead (large) type MS	7.5	40	-	17.0	166640	100	
		50			166641		

### Screws for concrete MMS-plus type Multi-Monti®-plus, galvanised


#### Standard anchorage depth:

Features										 	
Design	Thread-Ø [mm]	Length L [mm]	Spanner width [SW]	Clamping thickness t <sub>fix</sub> [mm]	Head-Ø dk [mm]	Drilled hole-Ø d <sub>0</sub> [mm]	Drilling depth h <sub>1</sub> [mm]	Anchoring depth h <sub>nom</sub> [mm]	Admissible loads [kN] acc. to ETA assessment		
									cracked concrete <sup>1)</sup>	uncracked concrete <sup>1)</sup>	
With hexagonal head type SS	7.5	40	10	5	14.0	6	40	35	1.0	2.0	
		50		15							
		60		5							
		80		25							
		100		45							
	10.0	70	13	5	19.0	8	75	65	4.4	7.9	
		100		35							
		120		55							
	12.0	90	15	1	22.0	10	100	90	7.9	12.3	
5											
With panhead (small) type P	7.5	40	T30	5	14.0	6	40	35	1.0	2.0	
		50		15							
		60		5							
With panhead (large) type MS	7.5	40	T30	5	17.0	10	40	35	1.0	2.0	
		50		15							

#### Reduced anchorage depth:

Features										
Design	Thread-Ø [mm]	Length L [mm]	Spanner width [SW]	Clamping thickness t <sub>fix</sub> [mm]	Head-Ø dk [mm]	Drilled hole-Ø d <sub>0</sub> [mm]	Drilling depth h <sub>1</sub> [mm]	Anchoring depth h <sub>nom</sub> [mm]	Admissible loads [kN] acc. to ETA assessment	
									cracked concrete <sup>1)</sup>	uncracked concrete <sup>1)</sup>
With hexagonal head type SS	7.5	60	10	25	14.0	6	40	35	1.0	2.0
		80		45						
		100		65						
	10.0	70	13	20	19.0	8	60	50	3.0	5.9
		100		50						
		120		70						
12.0	90	15	15	22.0	10	85	75	5.9	9.9	
			5							
With panhead (small) type P	7.5	60	T30	25	14.0	6	40	35	1.0	2.0

<sup>1)</sup> The admissible loads apply for single anchors, concrete strength class  $\geq$  C20/25 (B25), for central load without influence of axial spacing and edge spacing in cracked and uncracked concrete.  
The European Technical Assessment ETA-15/0784 shall be observed for dimensioning.

 Please refer to chapter „Technical information“ for further installation parameters.  
For fitting tools please refer to chapter „Tools“.