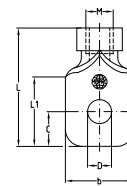


### Hanger sockets with inner thread and reinforcement ring

with round hole, galvanised

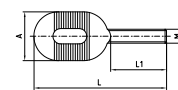
Thread	Hole diameter D [mm]	Max. permitted suspension load [N]	Part no.	Sales unit	Pack unit	Dimensions [mm]			
						b	C	L	L1
M8	8.5	3,600	<b>106600</b>	100	pieces	25	14	50	29
M10	10.5	4,600	<b>106597</b>			30	15	52	30
M12	13.0	3,600	<b>106598</b>						



### Slot bolt

with metric thread, galvanised

Thread	Width eye bolt A [mm]	Overall length L [mm]	Threaded length L1 [mm]	Oblong hole [mm]	Part no.	Sales unit	Pack unit
M8	28	77	30	8.5 x 25	<b>114454</b>	100	pieces



### Eye bolts with metric thread

forged, galvanised

Thread	Thread length [mm]	Total length [mm]	Hole diameter [mm]	Outer-Ø eye bolt [mm]	Part no.	Sales unit	Pack unit
M8	20	52	8.5	21	<b>120053</b>	100	pieces
M10	22	61	10.5	24	<b>120041</b>		



### Base plates with nut

galvanised

Size L x b x s [mm]	Connection socket	Oblong holes V [mm]	Hole-centre distance C [mm]	Part no.	Sales unit	Pack unit
Size 1 (80 x 30 x 3)	M8	9 x 16	54	<b>112407</b>	50	pieces
	M10			<b>112395</b>		
	M12			<b>112401</b>		
Size 2 (120 x 40 x 4)	M8	11 x 19	80	<b>112467</b>		
	M10			<b>112451</b>		
	M12			<b>112459</b>		
	M16			<b>112463</b>		

