

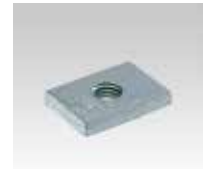
### MPC-Rail nuts

for MPC-Support channels and wall hanger brackets, galvanised

	For support channels	Thread	Length L [mm]	Width [mm]	Height [mm]	Part no.	Sales unit	Pack unit
<b>MPC-Rail nuts</b>	27/18, 28/30	M6	21.5	11.8	4.0	<b>118013</b>	100	pieces
		M8		14.0	5.0	<b>120043</b>		
	38/24–40/120	M6	31.0	16.0	6.0	<b>148757</b>		
			32.8	23.0	<b>148759</b>			
		M8	31.0	16.0	<b>148761</b>			
			32.8	23.0	<b>118040</b>			
		M10	31.0	16.0	<b>147854</b>			
			32.8	23.0	<b>117968</b>			
	M12			<b>117986</b>				
	<b>MPC-Rail nuts</b> polybox á 300 pieces	M16	32.5	32.5	8.0	<b>148762</b>		
M8		32.8	23.0	6.0	<b>157362</b>	1		
					<b>157361</b>			



Size 27/18–28/30



Size 38/24–40/120

### MPC-Double rail nut

for MPC-Support channels and wall hanger brackets, galvanised

For support channels	Thread	Part no.	Sales unit	Pack unit
38/24–40/120	M10	<b>117944</b>	50	pieces



### MPC-Clamp brackets

for MPC-Support channels and wall hanger brackets, galvanised

For support channels	For thread	Part no.	Sales unit	Pack unit
27/18, 28/30	M8	<b>114439</b>	100	pieces
	M10	<b>114503</b>		
38/24, 38/40, 38/48, 38/80	M8	<b>114447</b>		
	M10	<b>114450</b>		
39/52, 40/60, 40/80, 40/120	M8	<b>114471</b>		
	M10	<b>114474</b>		
	M12	<b>114477</b>		
	M16	<b>114459</b>		



### MPC-Clamp bracket

heavy-duty version, for MPC-Support channels and wall hanger brackets, to transfer large forces, galvanised

For support channels	For thread	Part no.	Sales unit	Pack unit
39/52, 40/60, 40/80, 40/120	M12	<b>114557</b>	25	pieces



### MPC-Protection caps

for MPC-Support channels and wall hanger brackets

For support channels	Part no.	Sales unit	Pack unit
27/18	<b>106000</b>	100	pieces
28/30	<b>106002</b>		
38/24, 38/48	<b>106004</b>		
38/40, 38/80	<b>106006</b>	50	
39/52	<b>106007</b>		
40/60, 40/120	<b>106008</b>	25	
40/80	<b>106009</b>		

