

Slide guide 4 kN galvanised

Field of application

- Attachment of pipes with temperature affected, axial expansion
- A variety of installation possibilities (floor-mount, ceiling-mount, wall-mount)
- Expansion point attachment for standing and suspended pipes
- Expansion point attachment as cross connection for pipe movement in axial and lateral directions

Advantages

- Smooth-running slide guide for high loads
- Flat, compact design for secure mounting in cramped spaces
- Large slide travel of up to 216 mm

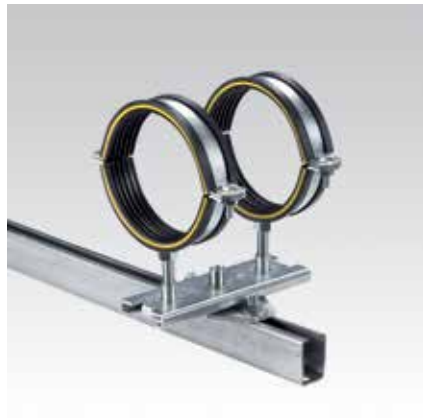
- Highly flexible use due to triple connection possibility with internal threads M12, M16 and external thread 1/2"
- One or two pipe clamps can be mounted depending on the application
- Quick and easy assembly due to center line and mounting marks
- Base plate compatible with MPC, MPR and MPT-Support channel systems
- Fire-proof design for use in escape routes and emergency routes
- For installation situations where both axial and radial movement needs to be accommodated, a 4 kN slide guide and a 4 kN



adapter slide guide can be mounted together as a cross connection



Single bossed clamp mounted with a M16 connection thread to a MPC-Support channel



Two single bossed clamps with M16 connection threads mounted on a MPC-Support channel

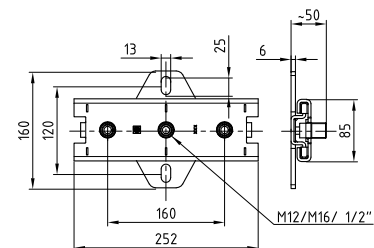


Two single bossed clamps with M16 connection threads mounted on a MPT-Console Q100

Features



Connecting thread	Temperature range	Max. recommended load [N]	Max. slide travel [mm]	Part no.	Sales unit	Pack unit
M12/ M16/1/2"	-40 °C to +100 °C	4,000	216	139936	1	pieces



Slide guide 4 kN for crisscross arrangement galvanised

Max. sliding distance [mm]	Part no.	Sales unit	Pack unit
216	139947	1	pieces



For cross connection assembly the following components are used:

	Thread	Length [mm]	Part no.	Sales unit	Pack unit
Coach bolt, DIN 603	–	30	143876	1	pieces
Hexagonal nut, DIN 934	M12	–	105447	100	
Washers, DIN 125			127286		

Box-section heavy slide guide 7.8 kN galvanised

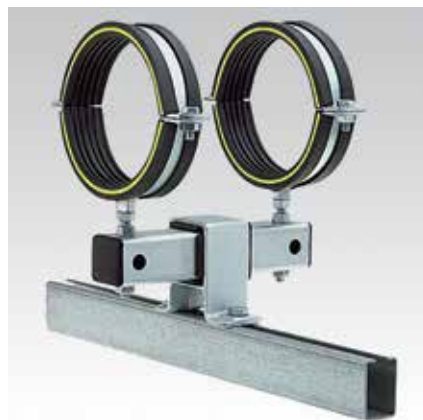
Field of application

- Suitable for wall fixing with horizontal or vertical pipes
- Attachment of pipes with temperature affected, axial expansion
- Variety of installation possibilities (floor-mount, ceiling-mount, wall-mount, rail-mount, cross stay)
- Expansion point attachment for standing and suspended pipes

Advantages

- Smooth-running slide guide for heavy loads

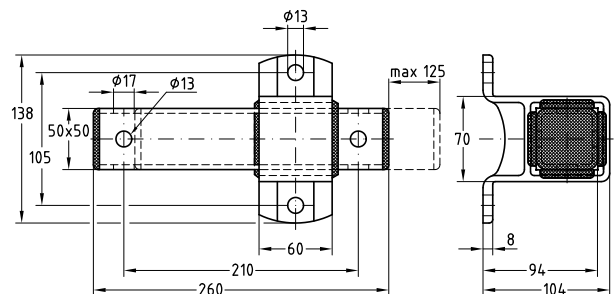
- With long slide travel up to 125 mm for pipelines with large changes in length
- Tilt-proof load distribution in standing and suspended installations
- Variable, height-adjustable pipe clamp attachments using threaded pins
- Two pipe clamps prevent jamming and misalignment
- Connection holes for M12 and M16



Features



Max. recommended load [N] 7,800



Max. slide travel [mm]	Part no.	Sales unit	Pack unit
125	105309	1	pieces

⚠ Also available in stainless steel version upon request.