

Chemical reaction anchors VBA

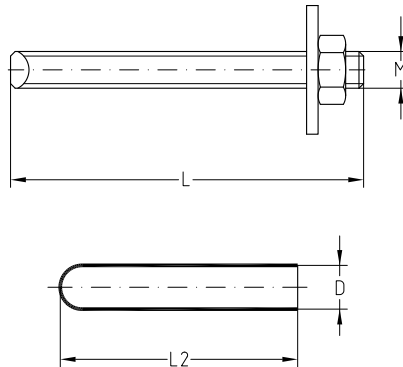
type MKT chemical reaction anchor V

Field of application

- For splay-free anchoring in uncracked concrete approved

Advantages

- Safety anchor for transmission of heavy loads
- Splay-free anchoring enables low axial and edge distances when fastening
- European Technical Assessment for anchorings in uncracked concrete
- Can also be used in damp concrete
- Homogenous secure connection between anchor rod and structural element, after hardening
- Anchor rods in other dimensions and stainless steel also available upon request



Features



	Size	Drill-Ø D [mm]	Ø mortar cartridge D [mm]	Length of mortar cartridge L2 [mm]	Part no.	Sales unit	Pack unit
Mortar cartridge for chemical reaction anchors VBA	M8	10	9	80	135516	10	pieces
	M10	12	11		135517		
	M12	14	13	95	135518		
	M16	18	17		135547		

Features



	Size	Length L [mm]	Effective anchoring depth [mm]	For mortar cartridge	Part no.	Sales unit	Pack unit
Anchor rods for chemical reaction anchors VBA	M8	110	80	VBA M8	135521	10	pieces
	M10	130	90	VBA M10	135522		
	M12	160	110	VBA M12	135523		
	M16	165	125	VBA M16	135548		

Features



	Type	Part no.		Permissible tensile load in C20/25 (B25) ¹⁾ [kN]
		of the anchor rod	of the mortar cartridge	
Chemical reaction anchors VBA	M8	135521	135516	7.9
	M10	135522	135517	11.9
	M12	135523	135518	15.9
	M16	135548	135547	19.8


¹⁾ The admissible loads apply for single anchors in concrete strength class C20/25 (B25) for axial tension without the influence of axial spacing and edge spacing. The safety coefficient according to ETA is included. All the specifications of the European Technical Assessment must be considered for dimensioning.

Chemical reaction anchors VBA type MKT chemical reaction anchor V



Features


Temperature in bore hole [°C]	Hardening time [min]	
	Dry concrete	Damp concrete
-5	300	600
0		
+5	60	120
+10		
+20	20	40
+30	10	20
+35		

 Please refer to chapter "Technical information" for additional characteristic values of plugs.

Steel wire brushes for chemical reaction anchors VBA

Size	Suitable for drilled hole [mm]	Ø Brush [mm]	Part no.	Sales unit	Pack unit
M8	10	11	135571	1	pieces
M10	12	13	135572		
M12	14	16	135573		
M16	18	20	135574		



 The load-bearing capability of the plug at all frictional and chemical plug and anchor connections is influenced decisively by the cleanliness of the drilled hole. Residues such as drill dust reduce the effectiveness of the connection. For this reason, blow or brush out the hole with the steel wire brush to free it from dust before inserting the mortar cartridges and anchor rods.

