

### EURO-QUICK® type EXP with DÄMMGULAST®, galvanised

#### Field of application

- Suitable for pipe attachments in industrial areas
- Suitable for fastening of drinking water and heating pipes
- For indoor use

#### Advantages

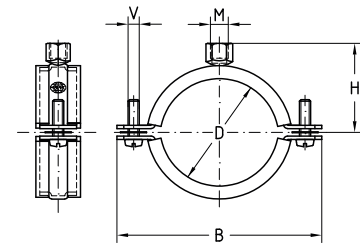
- Proven two-piece clamp
- High stiffness due to reinforcing bead
- The 2 locking screws allow adjustment to accommodate a greater variation in pipe diameter
- Tightening bolts with combination cross-head convenient for power driver
- Fastener screws with captive washer
- Vibration control tested



#### Features



Size	Max. recommended load [N]
¼"-1"	1,300
1¼"-2"	1,600
67-76 mm to 4"	2,300
122-133 mm to 8"	2,600



Connecting thread	Pipe outer diameter-Ø		Part no.	Sales unit	Pack unit	Dimensions [mm]		
	[mm]	[inch]				B	H	V
M8	13-19	¼	172003	100	pieces	54.5	24.0	M5
	17-23	⅜	172004			58.5	26.0	
	21-26	½	172005			62.5	28.0	
	26-30	¾	172006			68.5	31.0	
	33-37	1	172007			76.0	34.5	
	40-44	1¼	172008			91.5	39.0	
	48-52	1½	172009			99.0	42.5	
	53-58		172010			105.0	45.5	
M8/M10	60-64	2	172011	50		112.0	49.0	M6
	67-76		172012			126.0	62.0	
	75-81	2½	172013			134.0	66.0	
	83-90		172014			142.0	70.0	
	87-95	3	172015	25		145.0	71.5	
	94-104		172016			153.0	75.5	
	102-110		172017			161.0	79.5	
	109-117	4	172018			170.0	84.0	
	122-133		172019			184.0	90.5	
	128-139		172020			190.0	93.5	
	135-145	5	172021			197.0	97.0	
	151-162		172022	213.0	105.0			
	158-169	6	172023	222.0	109.5			
	194-204		172024	257.0	127.0			
	214-224	8	172025	272.0	136.0			