

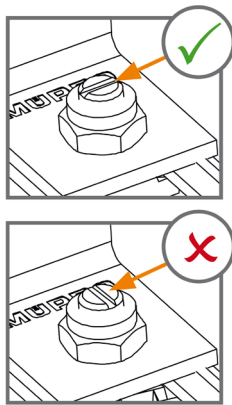
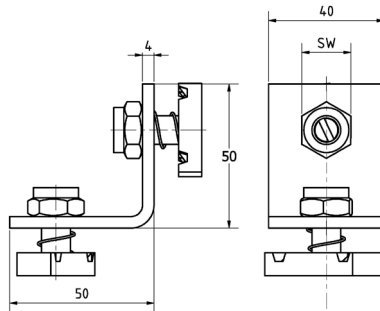
Mounting angle SB 90° pre-assembled galvanised

Application

- Pre-assembled bracket for connecting MPR and MPC system rails at a 90 ° angle
- Galvanised for use in dry interiors

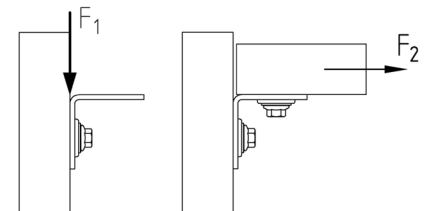
Your advantages

- Universal - corner connections of MPR and MPC support channels at a 90 ° angle
- Quick and easy - insert the bracket into the channel and tighten using a cordless or impact screwdriver
- Safe - checking the correct position of the sliding nut through a control slot



Features

System	Material thickness of support channel [mm]	Permissible load F ₁ [N]	Permissible load F ₂ [N]	Tightening torque [Nm]
MPR	1.5	1,500	1,000	20
	2.0, 2.5	2,500	1,500	



Size	For profiles	Spanner width [mm]	Part no.	Sales unit	Pack unit
50 x 50 x 40 x 4 mm	38/24-40/120, 41/21-41/124	17	169732	20	Pieces