

### Mineral wool pipe jackets with aluminium facing

U-Protect Pipe Section Alu 2

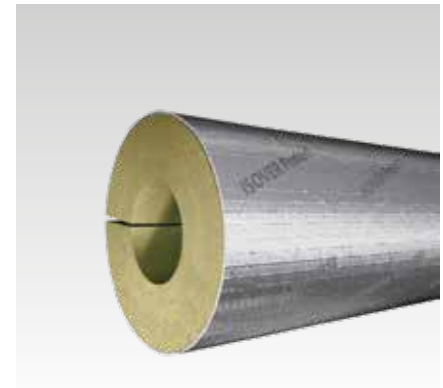
#### Application

- For thermal insulation of flammable and non-flammable pipes as well as for application areas, where non-flammable building material is required
- For use as pipe partition when routing through solid ceilings, and solid and lightweight partition walls

#### Your advantages

- Slit on one side for simple and quick fitting onto the pipe

- No acoustic bridges between pipe and building structure
- Pipe insulation meets the requirements of the Building Energy Act (GEG)
- No change in the insulation material between section insulation and component feed-through
- The 2-in-1 pipe section - heat and fire protection for piping in a single product
- Efficient to use due to low weight



#### Features



Material	Mineral wool pipe jackets with aluminium facing
Temperature range	Upper application limit temperature +620 °C, max. +100 °C on the facing acc. to EN 14303
Fire classification	A2L-s1-d0 acc. to EN 13501
General building authority test certificate	P-2400/259/15-MPA BS (flammable pipe), P-3084/259/12-MPA BS (non-flammable pipe)
Effective density [kg/m³]	68 - 88
Thermal conductivity	$\lambda_R = 0.035 \text{ W/mK}$ to GEG (40 °C)
Melting point	1,000 °C
Working temperature	$\geq +5 \text{ °C}$

Insulation thickness [mm]	Acc. to GEG	Nominal size [mm]	For pipe outer Ø [mm]	Length [mm]	Content [m/carton]	No storage items, delivery time upon request	Part no.	Sales unit	Pack unit
20	100 %	12	15	1,200	57.6		157250	1	Carton
		15	18		50.4		157251		
30	100 %	20	22		28.8	x	157264		
					43.2		157252		
					24		157265		
40					14.4		157277		
20	50 %	25	28		36		157253		
	100 %				19.2		157266		
							157278		
20	50 %	32	35		30		157254		
	100 %				19.2		157267		
					10.8		157279		
50							157288		
20	50 %	40	42		24		157255		
					14.4		157268		
	100 %				10.8		157280		
50							157289		

**⚠** Additions to fire behaviour: Non-flammable acc. to IMO-Resolution MSC.61(67) - (FTP-Code) IMO MSC/Circ.1120. Approved for use in shipbuilding acc. to EC type-examination certificate no. 114.504 and USCG no. 164.109/EC0736/114.504.

Required minimum insulation thickness acc. to GEG for copper pipes acc. to DIN EN 1057 or steel pipes acc. to DIN EN 10255 (middle row). In case of doubt, it has to be checked whether the requirements of GEG can be fulfilled with the specified insulation thicknesses.


Additional dimensions available on request.



### Mineral wool pipe jackets with aluminium facing

#### U-Protect Pipe Section Alu 2

Insulation thickness [mm]	Acc. to GEG	Nominal size [mm]	For pipe outer Ø [mm]	Length [mm]	Content [m/carton]	No storage items, delivery time upon request	Part no.	Sales unit	Pack unit
20		40	48	1,200	19.2	x	157256	1	Carton
30	50 %				24	x	157269		
40					9.6		157281		
50	100 %				10.8		157290		
20		50	54		28.8		157257		
30	50 %				19.2		157270		
40					10.8		157282		
50	100 %						157291		
20		60	60		27.6		157258		
30	50 %				19.2		157271		
40					10.8	x	157283		
50					9.6		157292		
60	100 %			4.8		157299			
20					64	24	x	157259	
30		65	76	14.4		157274			
40	50 %			10.8		157286			
50				4.8	x	157295			
60				6	x	157302			
70	100 %			4.8		157307			
80						x	165523		
30		80	89	10.8	x	165734			
60				4.8	x	157303			
80				3.6	x	165524			
90				1.2	x	157308			
100	100 %					157309			

-  Additions to fire behaviour: Non-flammable acc. to IMO-Resolution MSC.61(67) - (FTP-Code) IMO MSC/Circ.1120. Approved for use in shipbuilding acc. to EC type-examination certificate no. 114.504 and USCG no. 164.109/EC0736/114.504.
- Required minimum insulation thickness acc. to GEG for copper pipes acc. to DIN EN 1057 or steel pipes acc. to DIN EN 10255 (middle row). In case of doubt, it has to be checked whether the requirements of GEG can be fulfilled with the specified insulation thicknesses.
- Additional dimensions available on request.

