

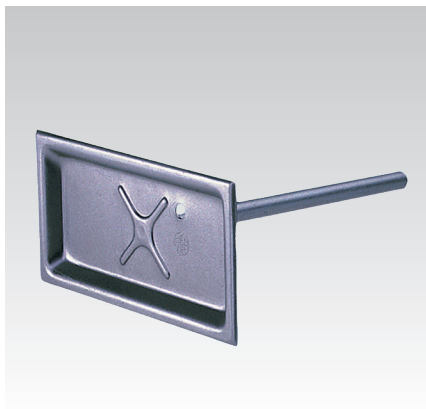
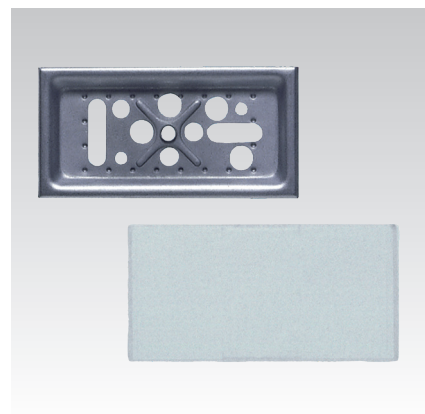
Base plates

Application

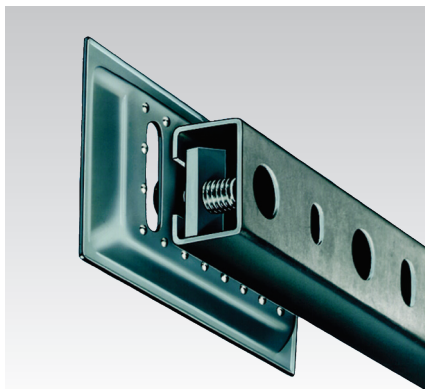
- For attachment of plastic signs and laminated plastic signs on building structure

Your advantages

- Variable attachments due to varied hole pattern of the base plate
- Versatile attachment options, e.g.:
 - Can be mounted to any round, oval or rectangular cross-section, regardless of size, by means of universal nameplate support and mounting strap (see pages 14/8 for examples of attachments)
 - Adjustment pimples for exact alignment with MPC-Support channels and universal nameplate supports
 - Also available with welding pins
 - Also available in stainless steel (V2A) for outdoor use with UV-resistant protective cover



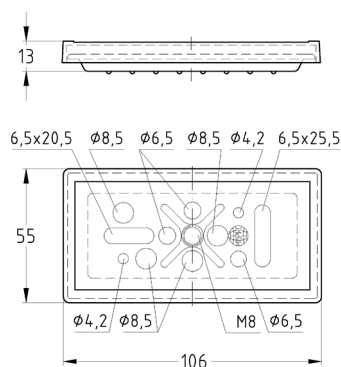
Mounting base with welding pin



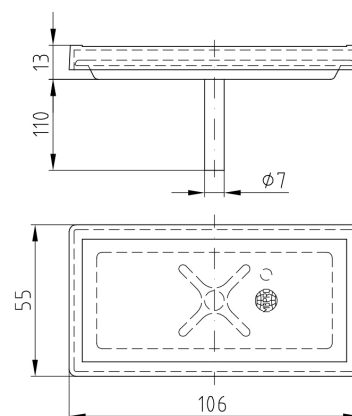
Adjustment pimples on the rear side ensure exact alignment of the linear mounted bases on a MPC-Support channel



Welding pin



Mounting base with threaded connection



Mounting base with welding pin

Design	Connecting thread	Part no.	Sales unit	Pack unit
Mounting base, with threaded connection, with protective cover, galvanised	M8	112618	50	Pieces
Mounting base, with threaded connection, with UV-resistant protective cover, V2A		112620		
Mounting base, with welding pin, 110 mm length, with protective cover, galvanised	-	112624		
Protective cover, for mounting base		105877		
Protective cover, UV-resistant, for mounting base		162140		