

## Under cut anchors

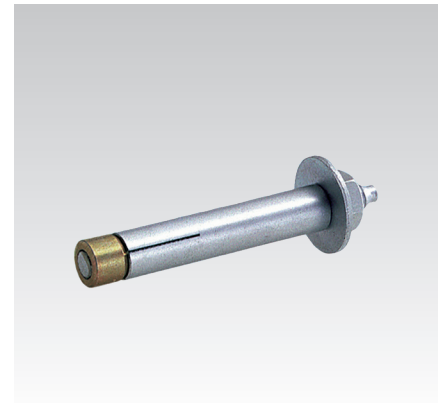
galvanised

### Application

- For anchorages in lightweight concrete panels and walls in dry interiors of buildings

### Your advantages

- Anchoring without splaying pressure, immediately loadable
- High load-bearing capacity due to pronounced undercut
- Simple setting by driving in the tapered bolt and the splaying sleeve without pilot drilling
- Approved by the building authorities



### Features



G 4980083

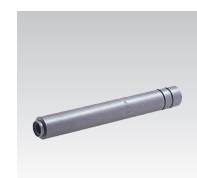
Design	Connecting thread	Thread length external thread clamping range [mm]	Thread length internal thread screw-in depth [mm]	Min. building element thickness [cm]	Admissible load uncracked gas concrete compression zone				Permissible loads cracked gas concrete tension zone	
					G2 [kN]	G4 [kN]	GB3.3 [kN]	GB4.4 [kN]	GB3.3 [kN]	GB4.4 [kN]
with external thread	M8	20	-	17.5	0.4	0.8	0.6	0.8	0.6	0.8
	M10				0.6	1.2	0.8	1.2	0.8	1.2
with internal thread	M8	-	8 - 13		0.4	0.8	0.6	0.8	0.6	0.8
	M10		10 - 18		0.6	1.2	0.8	1.2	0.8	1.2
	M12		12 - 18		0.6	1.2	0.8	1.2	0.8	1.2

Design	Type	Connecting thread	Part no.	Sales unit	Pack unit
with external thread	GBH A M8/20	M8	111264	25	Pieces
	GBH A M10/20	M10	111262		
with internal thread	GBH I M8	M8	111270		
	GBH I M10	M10	111266		
	GBH I M12	M12	111268		

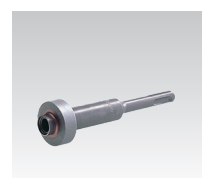
**i** For additional characteristic values of plugs for use in areas with requirements on the duration of fire resistance, please refer to the „Technical information“ chapter.

## Setting tools for under cut anchors

Design	Suitable for	Type	For anchor type	Part no.	Sales unit	Pack unit
Setting tool	Hammer drill with SDS chuck	EWG A 8 x 20	GBH A M8/20	107908	1	Pieces
		EWG A 10 x 20	GBH A M10/20	107907		
Manual hammer	Hammer weight ≥ 800 g	HWG A 8 x 20	GBH A M8/20	115373		
		HWG A 10 x 20	GBH A M10/20	115370		
		HWG I 8	GBH I M8	115379		
		HWG I 10/12	GBH I M10 + M12	115376		



Manual hammer



Setting tool

