

Through anchors

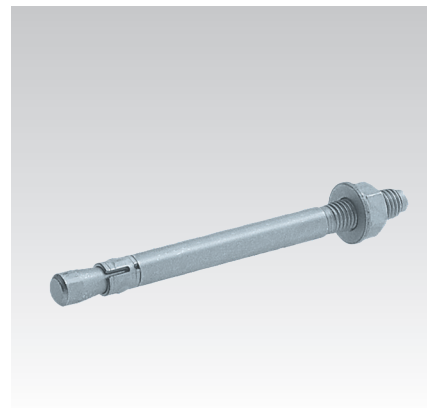
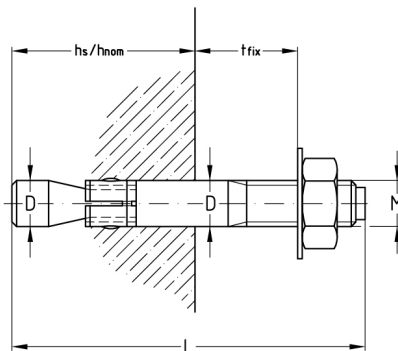
stainless steel

Application

- For anchorages of medium-weight loads in non-cracked concrete
- Attachment of metal and wood constructions, handrails, shelves and cable ducts
- Also applicable in hard natural stone

Your advantages

- Quick handling: Simply insert and tighten
- Practical through-fitting
- Splaying controlled by the tightening torque
- High security due to increasing splaying with increase in load
- European Technical Assessment (ETA) for non-cracked concrete




Features



Type	Connecting thread	Length L [mm]	Clamping thickness t_{fix} [mm]	Drilling diameter D [mm]	Drilling depth [mm]	FM	Uncracked concrete centrally tensile loaded ETA assessment		Material	Part no.	Sales unit	Pack unit
							Setting depth h_{nom} [mm]	Permissible load ¹⁾ [kN]				
St 8-45	M8	110	45	8	65		55	5.7	V4A	129518	100	Pieces
St 10-10	M10	85	10	10	70	x	60	7.6		129489	50	
St 10-20			20			x				129494		
St 10-50			125			50				x		
St 12-65	M12	160	65	12	90	x	80	11.9		129504	25	
St 16-30	M16	150	30	16	110	x	98	17.2		129488	10	

¹⁾ The approved loading applies for single anchors in concrete strength class $\geq C20/25$ (B25) for axially applied tension without the influence of axial and edge spacings. The safety coefficient according to ETAG is included. The European Technical Assessment shall be observed in dimensioning.

 For additional characteristic values of plugs for use in areas with requirements on the duration of fire resistance, please refer to the „Technical information“ chapter.

