

Toggle plugs

galvanised

Application

- For attachment on drywalls and roofs

Your advantages

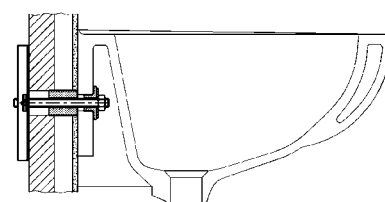
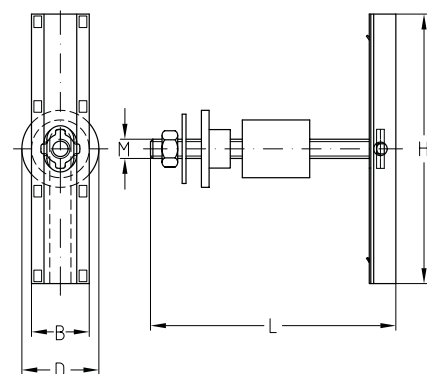
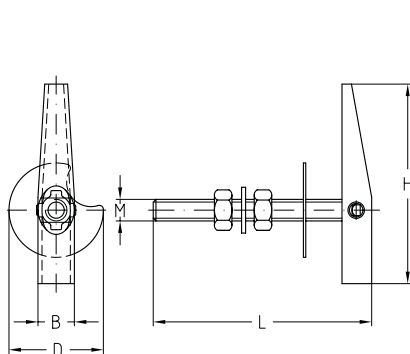
- Ideal for the attachment of supporting structures, e.g. MPC-Support channels, to partition walls, cavity walls, service shafts or trapezoidal metal sheeting
- Very good load distribution due to large supporting surface of the toggle
- Variable due to the adjustable thread length
- The M10/180 design gives very high load-bearing capacity, e.g. for the fixing of washbasins, wallmounted toilettes, boilers and all types of equipment



M6 to M8 version



M10 version



Sink fixture using a M10 toggle



Features

Size	Connecting thread	Length L [mm]	Max. recommended load [N]	Dimensions [mm]			Part no.	Sales unit	Pack unit
				B	D	H			
M6/100	M6	100	500	14	30	70	113112	100	Pieces
M8/70	M8	70	650	15	36	74	113118		
M8/100		100					113115		
M10/180	M10	180	1,700	30	38	140	113109	50	