

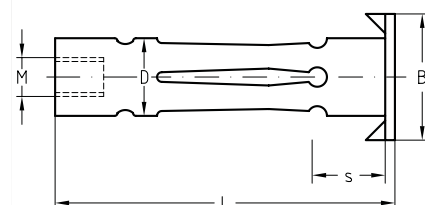
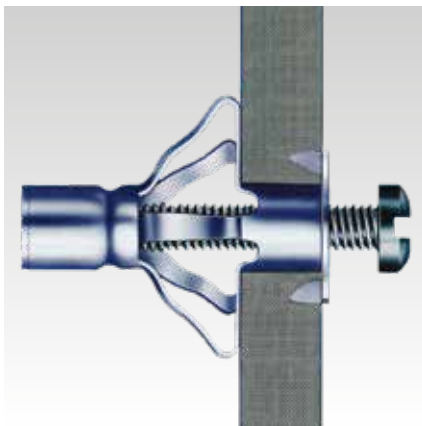
Cavity plugs galvanised

Application

- For mounting on cavity panels and drywall plasterboards made of gypsum, fiber metal sheets, chipboards and sheet metal


Your advantages

- Ideal solution for attachment to thin-walled panels
- Even all-round splaying ensures load distribution at the attachment point
- Large supporting surface for high loading capacity
- Can also be used in small cavities
- Available in a handy case with fitting tools



Features

Type	Connecting thread	Length L [mm]	Clamping thickness S [mm]	Drilling diameter D [mm]	Matching tension bolt	Max. recommended tensile load			Dimensions B [mm]	Part no.	Sales unit	Pack unit
						Plaster-board [N]	Wood panels [N]	Cement fibre slabs [N]				
4-3-14/32	M4	32	4 - 9	8	M4 x 40	200	300	350	13	116997	100	Pieces
4-16-20/45		45	16 - 22		M4 x 55					117000		
5-3-16/50	M5	50	5 - 18	12	M5 x 60				16	117009		
5-16-32/60		65	18 - 32		M5 x 70					117015		
6-1-5/16	M6	16	1 - 5		M6 x 25				17.5	116994		
6-3-16/50		53	5 - 18		M6 x 60					117021		
6-16-32/60		66	18 - 32		M6 x 75					117030		
8-3-16/50	M8	55	5 - 18	13	M8 x 65					117036		
8-16-32/60		68	18 - 32		M8 x 75					117042		

 For suitable bolts please refer to page 14/22.