

Under cut anchors

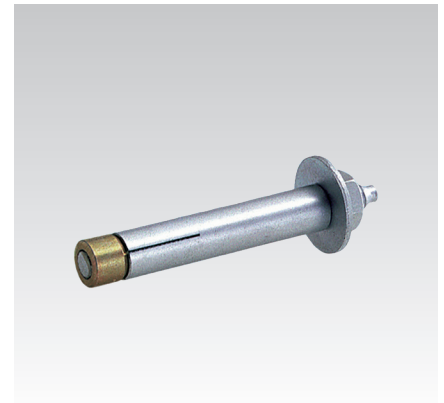
galvanised

Application

- For anchorages in lightweight concrete panels and walls in dry interiors of buildings

Your advantages

- Anchoring without splaying pressure, immediately loadable
- High load-bearing capacity due to pronounced undercut
- Simple setting by driving in the tapered bolt and the splaying sleeve without pilot drilling
- Approved by the building authorities



Features



G 4980083

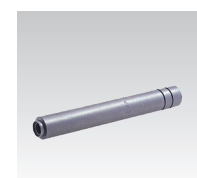
Design	Connecting thread	Thread length external thread clamping range [mm]	Thread length internal thread screw-in depth [mm]	Min. building element thickness [cm]	Admissible load uncracked gas concrete compression zone				Permissible loads cracked gas concrete tension zone	
					G2 [kN]	G4 [kN]	GB3.3 [kN]	GB4.4 [kN]	GB3.3 [kN]	GB4.4 [kN]
with external thread	M8	20	-	17.5	0.4	0.8	0.6	0.8	0.6	0.8
	M10				0.6	1.2	0.8	1.2	0.8	1.2
with internal thread	M8	-	8 - 13	17.5	0.4	0.8	0.6	0.8	0.6	0.8
	M10		10 - 18		0.6	1.2	0.8	1.2	0.8	1.2
	M12		12 - 18		0.6	1.2	0.8	1.2	0.8	1.2

Design	Type	Connecting thread	Part no.	Sales unit	Pack unit
with external thread	GBH A M8/20	M8	111264	25	Pieces
	GBH A M10/20	M10	111262		
with internal thread	GBH I M8	M8	111270		
	GBH I M10	M10	111266		
	GBH I M12	M12	111268		

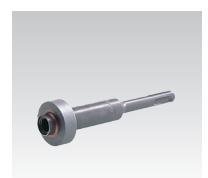
i For additional characteristic values of plugs for use in areas with requirements on the duration of fire resistance, please refer to the „Technical information“ chapter.

Setting tools for under cut anchors

Design	Suitable for	Type	For anchor type	Part no.	Sales unit	Pack unit
Setting tool	Hammer drill with SDS chuck	EWG A 8 x 20	GBH A M8/20	107908	1	Pieces
		EWG A 10 x 20	GBH A M10/20	107907		
Manual hammer	Hammer weight ≥ 800 g	HWG A 8 x 20	GBH A M8/20	115373		
		HWG A 10 x 20	GBH A M10/20	115370		
		HWG I 8	GBH I M8	115379		
		HWG I 10/12	GBH I M10 + M12	115376		



Manual hammer



Setting tool

